

For Research Use Only

CoraLite® Plus 488-conjugated RABEP2 Monoclonal antibody

Catalog Number: CL488-60125

Featured Product



Basic Information

Catalog Number:

CL488-60125

Size:

100ul , Concentration: 1000 ug/ml by Nanodrop;

Source:

Mouse

Isotype:

IgG1

Immunogen Catalog Number:

AG6197

GenBank Accession Number:

BC058900

GeneID (NCBI):

79874

UNIPROT ID:

Q9H5N1

Full Name:

rabaptin, RAB GTPase binding effector protein 2

Calculated MW:

64 kDa

Observed MW:

62 kDa

Purification Method:

Protein G purification

CloneNo.:

1A4A4

Recommended Dilutions:

IF/ICC 1:200-1:800

Excitation/Emission maxima

wavelengths:

493 nm / 522 nm

Applications

Tested Applications:

IF/ICC

Species Specificity:

human, rat

Positive Controls:

IF/ICC : H9C2 cells,

Background Information

RABEP2, also named as RABPT5B, plays a role in membrane trafficking and in homotypic early endosome fusion. It has two isoforms with MW 59-63 kDa.

Storage

Storage:

Store at -20°C. Avoid exposure to light. Stable for one year after shipment.

Storage Buffer:

PBS with 50% Glycerol, 0.05% Proclin300, 0.5% BSA, pH 7.3.

Aliquoting is unnecessary for -20°C storage

For technical support and original validation data for this product please contact:

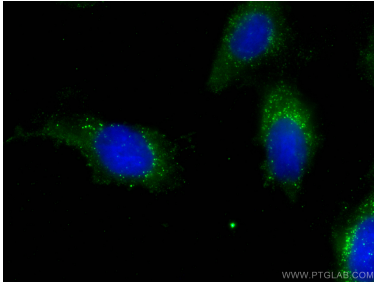
T: 1 (888) 4PTGLAB (1-888-478-4522) (toll free in USA), or 1(312) 455-8498 (outside USA)

E: proteintech@ptglab.com

W: ptglab.com

This product is exclusively available under Proteintech Group brand and is not available to purchase from any other manufacturer.

Selected Validation Data



Immunofluorescent analysis of (-20°C Methanol) fixed H9C2 cells using CoraLite® Plus 488 RABEP2 antibody (CL488-60125, Clone: 1A4A4) at dilution of 1:400.