

For Research Use Only

CoraLite® Plus 488-conjugated CD206 Monoclonal antibody



Catalog Number: CL488-60143

Featured Product

8 Publications

Basic Information

Catalog Number:

CL488-60143

Size:

100ul , Concentration: 1000 ug/ml by 4360

Nanodrop;

Source:

Mouse

Isotype:

IgG2a

GenBank Accession Number:

NM_002438

GeneID (NCBI):

4360

UNIPROT ID:

P22897

Full Name:

mannose receptor, C type 1

Calculated MW:

166 kDa

Purification Method:

Protein A purification

CloneNo.:

2A6A10

Recommended Dilutions:

IF-P 1:50-1:500

Excitation/Emission maxima

wavelengths:

493 nm / 522 nm

Applications

Tested Applications:

IF-P

Cited Applications:

IF

Species Specificity:

human

Cited Species:

human

Positive Controls:

IF-P : human lung cancer tissue,

Background Information

CD206, also named as MMR, CLEC13D and MRC1, is a type I membrane receptor that mediates the endocytosis of glycoproteins by macrophages. CD206 has been shown to bind high-mannose structures on the surface of potentially pathogenic viruses, bacteria, and fungi so that they can be neutralized by phagocytic engulfment. CD206 is a 170 kDa transmembrane protein which contains 5 domains: an amino-terminal cysteine-rich region, a fibronectin type II repeat, a series of eight tandem lectin-like carbohydrate recognition domains (responsible for the recognition of mannose and fucose), a transmembrane domain, and an intracellular carboxy-terminal tail. It is expressed on most tissue macrophages, in vitro derived dendritic cells, lymphatic and sinusoidal endothelia. This antibody is conjugated with CL488, Ex/Em 488 nm/515 nm.

Notable Publications

Author	Pubmed ID	Journal	Application
Jia-Bin Wang	35999359	Cancer Gene Ther	IF
Meng Xiang	39502640	Int J Nanomedicine	
Shuaikang Wang	38824976	J Ethnopharmacol	IF

Storage

Storage:

Store at -20°C. Avoid exposure to light. Stable for one year after shipment.

Storage Buffer:

PBS with 50% Glycerol, 0.05% Proclin300, 0.5% BSA, pH 7.3.

Aliquoting is unnecessary for -20°C storage

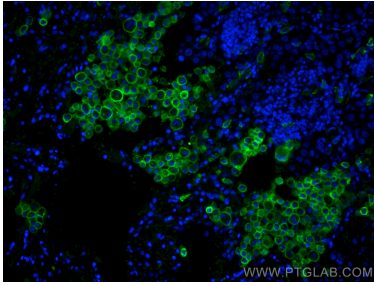
For technical support and original validation data for this product please contact:

T: 1 (888) 4PTGLAB (1-888-478-4522) (toll free in USA), or 1(312) 455-8498 (outside USA)

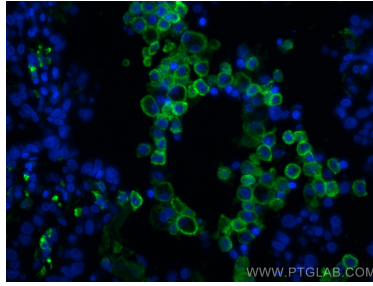
E: proteintech@ptglab.com
W: ptglab.com

This product is exclusively available under Proteintech Group brand and is not available to purchase from any other manufacturer.

Selected Validation Data



Immunofluorescent analysis of (4% PFA) fixed human lung cancer tissue using CoraLite® Plus 488 CD206 antibody (CL488-60143, Clone: 2A6A10) at dilution of 1:200.



Immunofluorescent analysis of (4% PFA) fixed human lung cancer tissue using CoraLite® Plus 488 CD206 antibody (CL488-60143, Clone: 2A6A10) at dilution of 1:200.