

For Research Use Only

CoraLite® Plus 488-conjugated CD3 Monoclonal antibody

Catalog Number: CL488-60181



Basic Information

| | | |
|--|---|---|
| Catalog Number: CL488-60181 | GenBank Accession Number: BC049847 | Purification Method: Protein A purification |
| Size: 100ul , Concentration: 1000 ug/ml by Nanodrop; | GeneID (NCBI): 916 | CloneNo.: 3F3A1 |
| Source: Mouse | ENSEMBL Gene ID: ENSG00000198851 | Recommended Dilutions: IF-P 1:50-1:500 IF/ICC 1:50-1:500 |
| Isotype: IgG2b | UNIPROT ID: P07766 | Excitation/Emission maxima wavelengths: 493 nm / 522 nm |
| Immunogen Catalog Number: AG11797 | Full Name: CD3e molecule, epsilon (CD3-TCR complex) | |
| | Calculated MW: 207 aa, 23 kDa | |

Applications

| | |
|---|---|
| Tested Applications: IF/ICC, IF-P | Positive Controls: |
| Species Specificity: human | IF-P : human lung cancer tissue, human tonsillitis tissue IF/ICC : Jurkat cells, |

Background Information

CD3 is a complex of proteins that directly associates with the T cell receptor (TCR). The TCR/CD3 complex of T-lymphocytes consists of either a TCR alpha/beta or TCR gamma/delta heterodimer coexpressed at the cell surface with the invariant subunits of CD3 labeled gamma, delta, epsilon, zeta, and eta. The TCR recognizes antigens bound to major histocompatibility complex (MHC) molecules. TCR-mediated peptide-MHC recognition is transmitted to the CD3 complex, leading to the intracellular signal transduction. CD3 is considered to be a pan-T cell marker for detection of normal and neoplastic T cells. This anti-CD3 is a monoclonal antibody directed against the epsilon chain of human CD3 molecule. And the antibody is conjugated with CL488, Ex/Em 488 nm/515 nm.

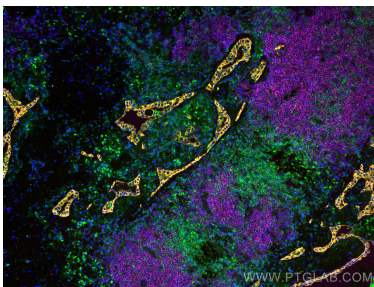
Storage

Storage:
Store at -20°C. Avoid exposure to light. Stable for one year after shipment.
Storage Buffer:
PBS with 50% Glycerol, 0.05% Proclin300, 0.5% BSA, pH 7.3.
Aliquoting is unnecessary for -20°C storage

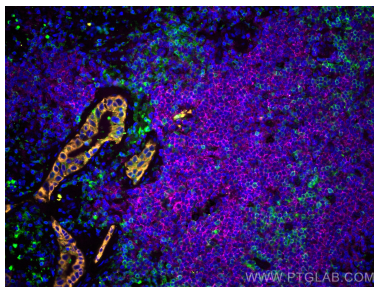
For technical support and original validation data for this product please contact:
T: 1 (888) 4PTGLAB (1-888-478-4522) (toll free in USA), or 1(312) 455-8498 (outside USA)
E: proteintech@ptglab.com
W: ptglab.com

This product is exclusively available under Proteintech Group brand and is not available to purchase from any other manufacturer.

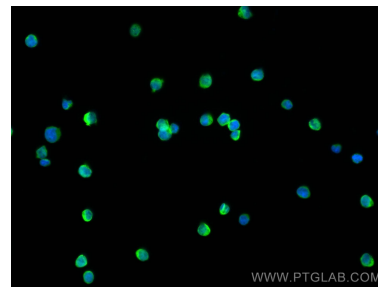
Selected Validation Data



Immunofluorescent analysis of (4% PFA) fixed human lung cancer tissue using CoraLite® Plus 488 CD3 antibody (CL488-60181, Clone: 3F3A1) at dilution of 1:100, CoraLite® 555 pan-keratin antibody (CL555-26411, orange), CoraLite® Plus 647 CD20 antibody (CL647-60271, Clone: 4A7G3, Magenta).



Immunofluorescent analysis of (4% PFA) fixed human lung cancer tissue using CoraLite® Plus 488 CD3 antibody (CL488-60181, Clone: 3F3A1) at dilution of 1:100, CoraLite® 555 pan-keratin antibody (CL555-26411, orange), CoraLite® Plus 647 CD20 antibody (CL647-60271, Clone: 4A7G3, Magenta).



Immunofluorescent analysis of (4% PFA) fixed Jurkat cells using CoraLite® Plus 488 CD3 antibody (CL488-60181, Clone: 3F3A1) at dilution of 1:100.