

For Research Use Only

CoraLite® Plus 488-conjugated ESR2 Monoclonal antibody



Catalog Number: CL488-60197

Featured Product

Basic Information

Catalog Number: CL488-60197	GenBank Accession Number: BC024181	Purification Method: Protein G purification
Size: 100ul , Concentration: 1000 µg/ml by Nanodrop;	GeneID (NCBI): 2100	CloneNo.: 5D2C9
Source: Mouse	Full Name: estrogen receptor 2 (ER beta)	Recommended Dilutions: WB 1:500-1:1000
Isotype: IgG1	Calculated MW: 59 kDa	Excitation/Emission maxima wavelengths: 493 nm / 522 nm
Immunogen Catalog Number: AG5103	Observed MW: 50 kDa	

Applications

Tested Applications: FC (Intra), WB	Positive Controls: WB : MCF-7 cells, SW 1990 cells
Species Specificity: human, mouse	

Background Information

Estrogen receptor-beta (ESR2) is a member of the superfamily of nuclear receptors, which can transduce extracellular signals into transcriptional responses. It binds estrogens with an affinity similar to that of ESR1, and activates expression of reporter genes containing estrogen response elements (ERE) in an estrogen-dependent manner. DNA-binding by ESR1 and ESR2 is rapidly lost at 37 degrees Celsius in the absence of ligand while in the presence of 17 beta-estradiol and 4-hydroxy-tamoxifen loss in DNA-binding at elevated temperature is more gradual. ESR2 exists various isoform and range of calculated molecular weight of isoforms is 50-60 kDa. The experiment detected two bands for ESR2 in isolated human germ cells, one at 60 kDa and a weaker one at 50 kDa (PMID: 14766008).

Storage

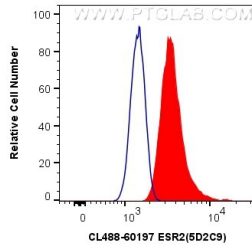
Storage:
Store at -20°C. Avoid exposure to light. Stable for one year after shipment.
Storage Buffer:
PBS with 50% Glycerol, 0.05% Proclin300, 0.5% BSA, pH 7.3.
Aliquoting is unnecessary for -20°C storage

*** 20ul sizes contain 0.1% BSA

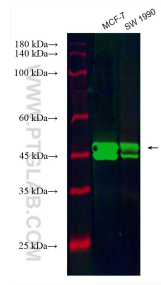
For technical support and original validation data for this product please contact:
T: 1 (888) 4PTGLAB (1-888-478-4522) (toll free in USA), or 1(312) 455-8498 (outside USA)
E: proteintech@ptglab.com
W: ptglab.com

This product is exclusively available under Proteintech Group brand and is not available to purchase from any other manufacturer.

Selected Validation Data



1×10^6 MCF-7 cells were intracellularly stained with 0.4 μ g CoraLite® Plus 488 Anti-Human ESR2 (CL488-60197, Clone:5D2C9) (red), or 0.4 μ g Control Antibody. Cells were fixed and permeabilized with Transcription Factor Staining Buffer Kit (PF00011).



Various lysates were subjected to SDS PAGE followed by western blot with CL488-60197 (ESR2 antibody) at dilution of 1:500 incubated at room temperature for 1.5 hours.