

For Research Use Only

CoraLite® Plus 488-conjugated ZAP70 Monoclonal antibody



Catalog Number: CL488-60200

Featured Product

Basic Information

Catalog Number: CL488-60200	GenBank Accession Number: BC039039	Purification Method: Protein A purification
Size: 100ul , Concentration: 1000 µg/ml by Nanodrop;	GeneID (NCBI): 7535	CloneNo.: 1A11G9
Source: Mouse	Full Name: zeta-chain (TCR) associated protein kinase 70kDa	Excitation/Emission maxima wavelengths: 488 nm / 515 nm
Isotype: IgG2a	Calculated MW: 70 kDa	
Immunogen Catalog Number: AG7943	Observed MW: 70 kDa	

Applications

Tested Applications:
FC (Intra)

Species Specificity:
human, mouse, pig

Background Information

Zeta-associated protein (ZAP)-70, a member of the Syk family of tyrosine kinases, plays an important role in T-cell receptor signaling, natural killer (NK) cell activation and early B-cell development. ZAP-70 is expressed in a subset of cases of chronic lymphocytic leukemia/small lymphocytic lymphoma (CLL/SLL) with unmutated immunoglobulin heavy-chain variable region (IgVH) genes and is associated with poor clinical outcome.

Storage

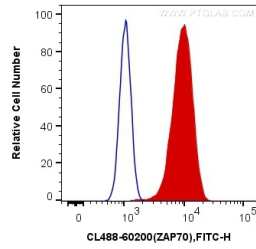
Storage:
Store at -20°C. Avoid exposure to light. Stable for one year after shipment.
Storage Buffer:
PBS with 50% Glycerol, 0.05% Proclin300, 0.5% BSA, pH 7.3.
Aliquoting is unnecessary for -20°C storage

*** 20ul sizes contain 0.1% BSA

For technical support and original validation data for this product please contact:
T: 1 (888) 4PTGLAB (1-888-478-4522) (toll free in USA), or 1(312) 455-8498 (outside USA) E: proteintech@ptglab.com W: ptglab.com

This product is exclusively available under Proteintech Group brand and is not available to purchase from any other manufacturer.

Selected Validation Data



1X10⁶ Jurkat cells were intracellularly stained with 0.4 ug CoraLite® Plus 488 Anti-Human ZAP70 (CL488-60200, Clone:1A11G9) (red), or 0.4 ug Mouse IgG2a Isotype Control (CL488-66360-2, Clone: K11A1B2A2) (blue). Cells were fixed with 4% PFA and permeabilized with Flow Cytometry Perm Buffer (PF00011-C).