

For Research Use Only

CoraLite® Plus 488-conjugated TRIP6 Monoclonal antibody



Catalog Number: CL488-60205

Basic Information

Catalog Number: CL488-60205	GenBank Accession Number: BC004249	Purification Method: Protein G purification
Size: 100ul , Concentration: 1000 µg/ml by Nanodrop;	GeneID (NCBI): 7205	CloneNo.: 5D8C7
Source: Mouse	UNIPROT ID: Q15654	Excitation/Emission maxima wavelengths: 493 nm / 522 nm
Isotype: IgG1	Full Name: thyroid hormone receptor interactor 6	
Immunogen Catalog Number: AG15149	Calculated MW: 476 aa, 50 kDa	
	Observed MW: 50 kDa	

Applications

Tested Applications:
FC (Intra)

Species Specificity:
human, mouse

Background Information

TRIP6 (thyroid receptor-interacting protein 6), also known as ZRP-1 (zyxin-related protein 1), is a member of the zyxin family that has been implicated in actin reorganization and cell motility. Trip6 has been proposed to transport signals from the cell surface to the nucleus.

Storage

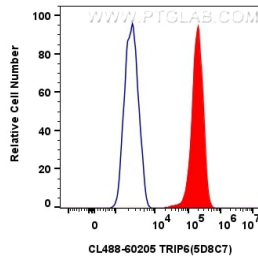
Storage:
Store at -20°C. Avoid exposure to light. Stable for one year after shipment.
Storage Buffer:
PBS with 50% Glycerol, 0.05% Proclin300, 0.5% BSA, pH 7.3.
Aliquoting is unnecessary for -20°C storage

*** 20ul sizes contain 0.1% BSA

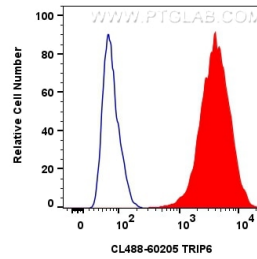
For technical support and original validation data for this product please contact:
T: 1 (888) 4PTGLAB (1-888-478-4522) (toll free in USA), or 1(312) 455-8498 (outside USA) E: proteintech@ptglab.com
W: ptglab.com

This product is exclusively available under Proteintech Group brand and is not available to purchase from any other manufacturer.

Selected Validation Data



1x10⁶ HeLa cells were intracellularly stained with 0.8 ug Coralite® Plus 488 Trip6 Monoclonal Antibody (CL488-60205, Clone:5D8C7)(red), or 0.8 ug Coralite® Plus 488 Mouse IgG1 Isotype Control (MOPC-21) (CL488-65124, Clone: MOPC-21) (blue). Cells were fixed with 4% PFA and permeabilized with Flow Cytometry Perm Buffer (PF00011-C).



1x10⁶ HepG2 cells were intracellularly stained with 0.8 ug Coralite® Plus 488 Trip6 Monoclonal Antibody (CL488-60205, Clone:5D8C7)(red), or 0.8 ug Coralite® Plus 488 Mouse IgG1 Isotype Control (MOPC-21) (CL488-65124, Clone: MOPC-21) (blue). Cells were fixed with 4% PFA and permeabilized with Flow Cytometry Perm Buffer (PF00011-C).