

For Research Use Only

CoraLite® Plus 488-conjugated LYN Monoclonal antibody

Catalog Number: CL488-60211



Basic Information

Catalog Number: CL488-60211	GenBank Accession Number: BC075002	Purification Method: Protein A purification
Size: 100ul , Concentration: 1000 ug/ml by Nanodrop;	GeneID (NCBI): 4067	CloneNo.: 3C7F2
Source: Mouse	UNIPROT ID: P07948	Recommended Dilutions: IF/ICC 1:50-1:500
Isotype: IgG2a	Full Name: v-src-1 Yamaguchi sarcoma viral related oncogene homolog	Excitation/Emission maxima wavelengths: 493 nm / 522 nm
Immunogen Catalog Number: AG12723	Calculated MW: 512 aa, 59 kDa	
	Observed MW: 56 kDa	

Applications

Tested Applications: IF/ICC, FC (Intra)	Positive Controls: IF/ICC : HepG2 cells,
Species Specificity: human, mouse	

Background Information

LYN, also named as JTK8, p53Lyn and p56Lyn, belongs to the protein kinase superfamily, Tyr protein kinase family and SRC subfamily. It is a non-receptor tyrosine-protein kinase that transmits signals from cell surface receptors and plays an important role in the regulation of innate and adaptive immune responses, hematopoiesis, responses to growth factors and cytokines, integrin signaling, but also responses to DNA damage and genotoxic agents. LYN is a component of the mTOR (mammalian target of rapamycin) pathway.

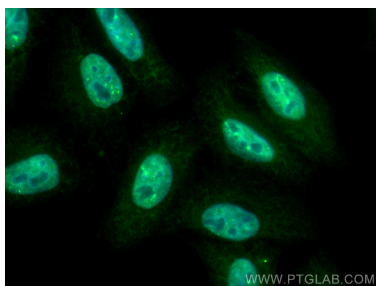
Storage

Storage:
Store at -20°C. Avoid exposure to light. Stable for one year after shipment.
Storage Buffer:
PBS with 50% Glycerol, 0.05% Proclin300, 0.5% BSA, pH 7.3.
Aliquoting is unnecessary for -20°C storage

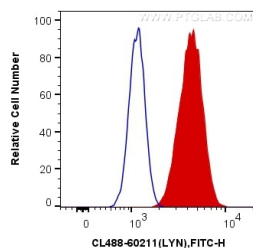
For technical support and original validation data for this product please contact:
T: 1 (888) 4PTGLAB (1-888-478-4522) (toll free in USA), or 1(312) 455-8498 (outside USA)
E: proteintech@ptglab.com
W: ptglab.com

This product is exclusively available under Proteintech Group brand and is not available to purchase from any other manufacturer.

Selected Validation Data



Immunofluorescent analysis of (4% PFA) fixed HepG2 cells using CoraLite® Plus 488 LYN antibody (CL488-60211, Clone: 3C7F2) at dilution of 1:200.



1X10⁶ Ramos cells were intracellularly stained with 0.8 ug CoraLite® Plus 488 Anti-Human LYN (CL488-60211, Clone:3C7F2) (red), or 0.8 ug Mouse IgG2a Isotype Control (CL488-66360-2, Clone: K11A1B2A2) (blue). Cells were fixed with 4% PFA and permeabilized with Flow Cytometry Perm Buffer (PF00011-C).