

For Research Use Only

CoraLite® Plus 488-conjugated Cytoglobin Monoclonal antibody

Catalog Number:CL488-60228



Basic Information

Catalog Number:

CL488-60228

GenBank Accession Number:

BC029798

Purification Method:

Protein G purification

Size:

100ul , Concentration: 1000 ug/ml by 114757

GeneID (NCBI):

114757

CloneNo.:

4C7E11

Nanodrop;

UNIPROT ID:

Q8WWM9

Recommended Dilutions:

IF/ICC 1:50-1:500

Source:

Mouse

Full Name:

cytoglobin

Excitation/Emission maxima
wavelengths:

493 nm / 522 nm

Isotype:

IgG1

Calculated MW:

190 aa, 21 kDa

Immunogen Catalog Number:

AG4161

Observed MW:

27-29 kDa

Applications

Tested Applications:

IF/ICC

Positive Controls:

IF/ICC : HeLa cells,

Species Specificity:

human, mouse, pig, rat

Background Information

Cytoglobin is a ubiquitously expressed hexacoordinate hemoglobin that may facilitate diffusion of oxygen through tissues. The protein, with calculated MW of 21 kDa, runs as a 29 kDa one in canine retina, kidney, liver, lung, and heart. It may be caused by posttranslational modification of the protein. Various immuno-staining patterns were reported including nuclear, cytoplasm and extracellular location.

Storage

Storage:

Store at -20°C. Avoid exposure to light. Stable for one year after shipment.

Storage Buffer:

PBS with 50% Glycerol, 0.05% Proclin300, 0.5% BSA, pH 7.3.

Aliquoting is unnecessary for -20°C storage

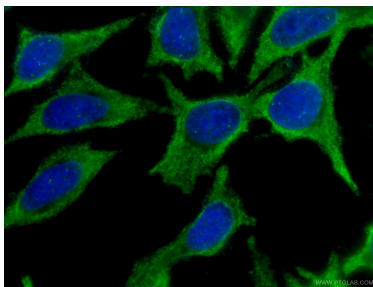
For technical support and original validation data for this product please contact:

T: 1 (888) 4PTGLAB (1-888-478-4522) (toll free
in USA), or 1(312) 455-8498 (outside USA)

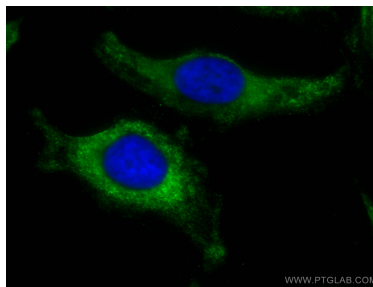
E: proteintech@ptglab.com
W: ptglab.com

This product is exclusively available under Proteintech
Group brand and is not available to purchase from any
other manufacturer.

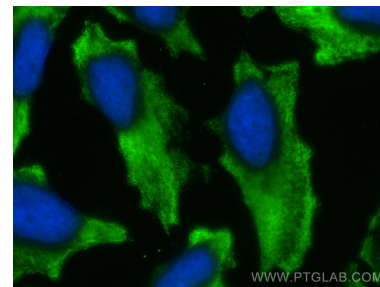
Selected Validation Data



Immunofluorescent analysis of (-20°C Ethanol) fixed HeLa cells using CL488-60228 (Cytoglobin antibody) at dilution of 1:100. .



Immunofluorescent analysis of (-20°C Methanol) fixed HeLa cells using CoraLite® Plus 488 Cytoglobin antibody (CL488-60228, Clone: 4C7E11) at dilution of 1:200.



Immunofluorescent analysis of (-20°C Methanol) fixed HeLa cells using CoraLite® Plus 488 Cytoglobin antibody (CL488-60228, Clone: 4C7E11) at dilution of 1:200.