

For Research Use Only

CoraLite® Plus 488-conjugated Myosin Light Chain 2 Monoclonal antibody

Catalog Number: CL488-60229



Basic Information

Catalog Number:

CL488-60229

Size:

100ul , Concentration: 1000 ug/ml by Nanodrop;

Source:

Mouse

Isotype:

IgG1

Immunogen Catalog Number:

AG1356

GenBank Accession Number:

BC015821

GeneID (NCBI):

4633

UNIPROT ID:

P10916

Full Name:

myosin, light chain 2, regulatory, cardiac, slow

Calculated MW:

19 kDa

Observed MW:

18 kDa

Purification Method:

Protein G purification

CloneNo.:

5A1F1

Recommended Dilutions:

IF/ICC 1:50-1:500

Excitation/Emission maxima wavelengths:

493 nm / 522 nm

Applications

Tested Applications:

IF/ICC

Species Specificity:

human, mouse, rat, pig

Positive Controls:

IF/ICC : C2C12 cells,

Background Information

MYL2, also named as MLC-2v and MLC-2, is ventricular/cardiac muscle isoform. Defects in MYL2 are the cause of cardiomyopathy familial hypertrophic type 10 (CMH10). Defects in MYL2 are the cause of cardiomyopathy familial hypertrophic with mid-left ventricular chamber type 2 (MVC2). MYL2 has been widely used as a marker of mature ventricular cardiomyocytes.

Storage

Storage:

Store at -20°C. Avoid exposure to light. Stable for one year after shipment.

Storage Buffer:

PBS with 50% Glycerol, 0.05% Proclin300, 0.5% BSA, pH 7.3.

Aliquoting is unnecessary for -20°C storage

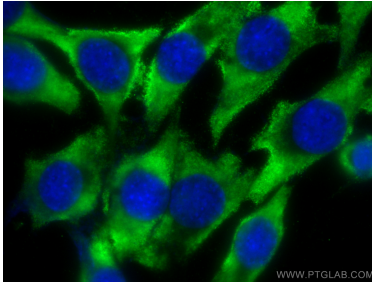
For technical support and original validation data for this product please contact:

T: 1 (888) 4PTGLAB (1-888-478-4522) (toll free in USA), or 1(312) 455-8498 (outside USA)

E: proteintech@ptglab.com
W: ptglab.com

This product is exclusively available under Proteintech Group brand and is not available to purchase from any other manufacturer.

Selected Validation Data



Immunofluorescent analysis of (-20°C Ethanol)
fixed C2C12 cells using CoraLite® Plus 488 Myosin
Light Chain 2 antibody (CL488-60229, Clone: 5A1F1
) at dilution of 1:200.