

For Research Use Only

# CoraLite® Plus 488-conjugated COTL1 Monoclonal antibody



Catalog Number: CL488-60237

Featured Product

1 Publications

## Basic Information

|  |   |   |
|--|---|---|
| <b>Catalog Number:</b><br>CL488-60237                          | <b>GenBank Accession Number:</b><br>BC010884          | <b>Purification Method:</b><br>Protein G purification             |
| <b>Size:</b><br>100ul , Concentration: 1000 ug/ml by Nanodrop; | <b>GeneID (NCBI):</b><br>23406                        | <b>CloneNo.:</b><br>4A3D9   |
| <b>Source:</b><br>Mouse  | <b>UNIPROT ID:</b><br>Q14019                          | <b>Recommended Dilutions:</b><br>IF/ICC 1:50-1:500                |
| <b>Isotype:</b><br>IgG1  | <b>Full Name:</b><br>coactosin-like 1 (Dictyostelium) | <b>Excitation/Emission maxima wavelengths:</b><br>493 nm / 522 nm |
| <b>Immunogen Catalog Number:</b><br>AG1230                     | <b>Calculated MW:</b><br>16 kDa                       |   |
|  | <b>Observed MW:</b><br>16 kDa                         |   |

## Applications

|  |  |
|--|--|
| <b>Tested Applications:</b><br>IF/ICC            | <b>Positive Controls:</b><br>IF/ICC : HepG2 cells, |
| <b>Cited Applications:</b><br>IF                 |  |
| <b>Species Specificity:</b><br>human, mouse, pig |  |
| <b>Cited Species:</b><br>human                   |  |

## Background Information

COTL1, also named as CLP, binds to F-actin in a calcium-independent manner. And it has no direct effect on actin depolymerization.

## Notable Publications

| Author         | Pubmed ID | Journal             | Application |
|----------------|-----------|---------------------|-------------|
| Susana Lechuga | 39040043  | Front Cell Dev Biol | IF          |

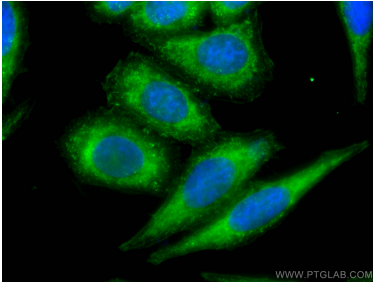
## Storage

**Storage:**  
Store at -20°C. Avoid exposure to light. Stable for one year after shipment.  
**Storage Buffer:**  
PBS with 50% Glycerol, 0.05% Proclin300, 0.5% BSA, pH 7.3.  
Aliquoting is unnecessary for -20°C storage

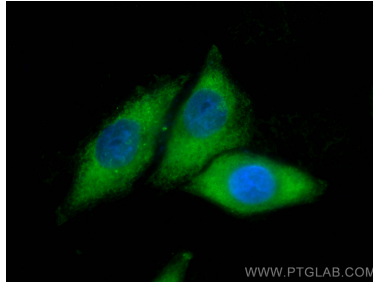
For technical support and original validation data for this product please contact:  
T: 1 (888) 4PTGLAB (1-888-478-4522) (toll free in USA), or 1(312) 455-8498 (outside USA)  
E: proteintech@ptglab.com  
W: ptglab.com

This product is exclusively available under Proteintech Group brand and is not available to purchase from any other manufacturer.

## Selected Validation Data



Immunofluorescent analysis of (-20°C Ethanol) fixed HepG2 cells using CoraLite® Plus 488-conjugated COTL1 antibody (CL488-60237, Clone: 4A3D9 ) at dilution of 1:100.



Immunofluorescent analysis of (-20°C Ethanol) fixed HepG2 cells using CoraLite® Plus 488 COTL1 antibody (CL488-60237, Clone: 4A3D9) at dilution of 1:200.