

For Research Use Only

# CoraLite® Plus 488-conjugated PKM2-specific Monoclonal antibody

Catalog Number: CL488-60268

Featured Product

1 Publications



## Basic Information

Catalog Number:

CL488-60268

Size:

100ul, Concentration: 1000 ug/ml by Nanodrop;

Source:

Mouse

Isotype:

IgG1

GenBank Accession Number:

NM\_002654

GeneID (NCBI):

5315

UNIPROT ID:

P14618

Full Name:

PKM pyruvate kinase, muscle

Calculated MW:

58 kDa

Observed MW:

58 kDa

Purification Method:

Protein G purification

CloneNo.:

1C11C7

Recommended Dilutions:

IF/ICC 1:50-1:500

Excitation/Emission maxima wavelengths:

493 nm / 522 nm

## Applications

Tested Applications:

IF/ICC, FC (Intra)

Cited Applications:

IF

Species Specificity:

human, mouse, rat

Cited Species:

mouse

Positive Controls:

IF/ICC : L02 cells, HepG2 cells

## Background Information

PKM, also named as OIP3, PK2, PK3, PKM, p58, THBP1, CTHBP and Tumor M2-PK, belongs to the pyruvate kinase family. It is glycolytic enzyme that catalyzes the transfer of a phosphoryl group from phosphoenolpyruvate (PEP) to ADP, generating ATP. It stimulates POU5F1-mediated transcriptional activation. PKM plays a general role in caspase independent cell death of tumor cells. PKM has 2 isoforms named as PKM1/M2. The activity of the M2 isoform can be inhibited by tyrosine kinase signalling in tumour cells. The primary pyruvate kinase isoform before tumour development is PK-M1; however, the primary isoform from four independent tumours is PK-M2 (PMID:18337823). The immunogen of this antibody is M2 isoform and this antibody is specific to PKM2 isoform.

## Notable Publications

Author	Pubmed ID	Journal	Application
Khrystyna Sych	36633604	J Mol Med (Berl)	IF

## Storage

Storage:

Store at -20°C. Avoid exposure to light. Stable for one year after shipment.

Storage Buffer:

PBS with 50% Glycerol, 0.05% Proclin300, 0.5% BSA, pH 7.3.

Aliquoting is unnecessary for -20°C storage

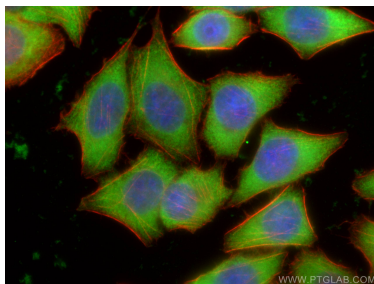
For technical support and original validation data for this product please contact:

T: 1 (888) 4PTGLAB (1-888-478-4522) (toll free in USA), or 1(312) 455-8498 (outside USA)

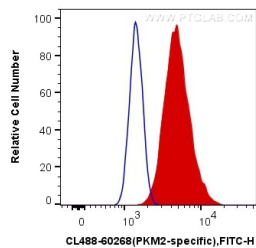
E: [proteintech@ptglab.com](mailto:proteintech@ptglab.com)  
W: [ptglab.com](http://ptglab.com)

This product is exclusively available under Proteintech Group brand and is not available to purchase from any other manufacturer.

## Selected Validation Data



Immunofluorescent analysis of (-20°C Ethanol) fixed L02 cells using Coralite® Plus 488-conjugated PKM2-specific antibody (CL488-60268, Clone: 1C11C7) at dilution of 1:100, CL594-Phalloidin (red).



1X10<sup>6</sup> HeLa cells were intracellularly stained with 0.4 ug Coralite® Plus 488 Anti-Human PKM2-specific (CL488-60268, Clone:1C11C7) (red), or 0.4 ug Mouse IgG1 Isotype Control (CL488-66360, Clone: T1F8D3F10) (blue). Cells were fixed with 4% PFA and permeabilized with Flow Cytometry Perm Buffer (PF00011-C).