

For Research Use Only

CoraLite® Plus 488-conjugated CD20 Monoclonal antibody

Catalog Number: CL488-60271



Basic Information

Catalog Number:

CL488-60271

Size:

100ul , Concentration: 2000 ug/ml by Nanodrop;

Source:

Mouse

Isotype:

IgG2b

GenBank Accession Number:

BC002807

GeneID (NCBI):

931

UNIPROT ID:

P11836

Full Name:

membrane-spanning 4-domains, subfamily A, member 1

Calculated MW:

297 aa, 33 kDa

Purification Method:

Protein G purification

CloneNo.:

4A7G3

Recommended Dilutions:

IF-P 1:50-1:500

IF/ICC 1:50-1:500

Excitation/Emission maxima wavelengths:

493 nm / 522 nm

Applications

Tested Applications:

IF/ICC, IF-P

Species Specificity:

human

Positive Controls:

IF-P : human tonsillitis tissue, human lung cancer tissue, Raji cells

IF/ICC : human tonsillitis tissue, human lung cancer tissue, Raji cells

Background Information

CD20 is a 33-37 kDa transmembrane phosphoprotein. CD20 is a B-lymphocyte surface molecule that is widely expressed during B-cell ontogeny, from early pre-B-cell developmental stages until final differentiation into plasma cells. CD20 functions as calcium-permeable cation channel. It is involved in the regulation of B-cell activation and proliferation. CD20 serves as a useful target for antibody-mediated therapeutic depletion of B-cells. This antibody is conjugated with CL488(Ex/Em 488 nm/515 nm).

Storage

Storage:

Store at -20°C. Avoid exposure to light. Stable for one year after shipment.

Storage Buffer:

PBS with 50% Glycerol, 0.05% Proclin300, 0.5% BSA, pH 7.3.

Aliquoting is unnecessary for -20°C storage

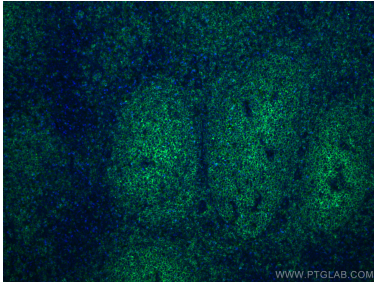
For technical support and original validation data for this product please contact:

T: 1 (888) 4PTGLAB (1-888-478-4522) (toll free in USA), or 1(312) 455-8498 (outside USA)

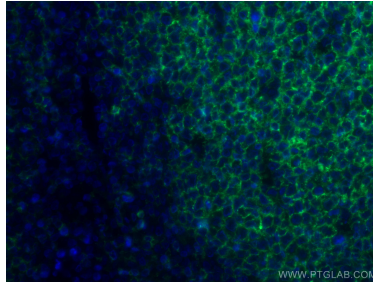
E: proteintech@ptglab.com
W: ptglab.com

This product is exclusively available under Proteintech Group brand and is not available to purchase from any other manufacturer.

Selected Validation Data



Immunofluorescent analysis of (4% PFA) fixed human tonsillitis tissue using CL488-60271 (CD20 antibody) at dilution of 1:100.



Immunofluorescent analysis of (4% PFA) fixed human tonsillitis tissue using CL488-60271 (CD20 antibody) at dilution of 1:100.