

For Research Use Only

# CoraLite® Plus 488-conjugated SECTM1 Monoclonal antibody



Catalog Number: CL488-60281

## Basic Information

<b>Catalog Number:</b> CL488-60281	<b>GenBank Accession Number:</b> BC017716	<b>Purification Method:</b> Thiophilic affinity chromatograph
<b>Size:</b> 100ul , Concentration: 1000 µg/ml by Nanodrop;	<b>GeneID (NCBI):</b> 6398	<b>CloneNo.:</b> 1C11B4
<b>Source:</b> Mouse	<b>Full Name:</b> secreted and transmembrane 1	<b>Excitation/Emission maxima wavelengths:</b> 493 nm / 522 nm
<b>Isotype:</b> IgM	<b>Calculated MW:</b> 248 aa, 27 kDa	
<b>Immunogen Catalog Number:</b> AG14645	<b>Observed MW:</b> 27 kDa	

## Applications

**Tested Applications:**  
FC (Intra)

**Species Specificity:**  
human

## Background Information

SECTM1, also named as protein K12, is originally identified by its location just upstream of the CD7 locus. It has been proposed as a ligand for CD7. SECTM1 is involved in thymocyte signaling. This antibody is specific to SECTM1.

## Storage

**Storage:**  
Store at -20°C. Avoid exposure to light. Stable for one year after shipment.

**Storage Buffer:**  
PBS with 50% Glycerol, 0.05% Proclin300, 0.5% BSA, pH 7.3.

Aliquoting is unnecessary for -20°C storage

\*\*\* 20ul sizes contain 0.1% BSA

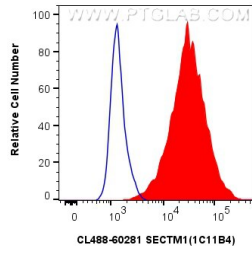
For technical support and original validation data for this product please contact:

T: 1 (888) 4PTGLAB (1-888-478-4522) (toll free  
in USA), or 1(312) 455-8498 (outside USA)

E: [proteintech@ptglab.com](mailto:proteintech@ptglab.com)  
W: [ptglab.com](http://ptglab.com)

This product is exclusively available under Proteintech Group brand and is not available to purchase from any other manufacturer.

## Selected Validation Data



1X10<sup>6</sup> PC-3 cells were intracellularly stained with 0.8 ug CoraLite® Plus 488 Anti-Human SECTM1 (CL488-60281, Clone:1C11B4) (red), or 0.8 ug Isotype Control. Cells were fixed with 4% PFA and permeabilized with Flow Cytometry Perm Buffer (PF00011-C).