

For Research Use Only

CoraLite® Plus 488-conjugated FAM3C Monoclonal antibody

Catalog Number: CL488-60282



Basic Information

Catalog Number:

CL488-60282

Size:

100ul , Concentration: 1000 ug/ml by Nanodrop;

Source:

Mouse

Isotype:

IgG1

Immunogen Catalog Number:

AG5516

GenBank Accession Number:

BC046932

GeneID (NCBI):

10447

UNIPROT ID:

Q92520

Full Name:

family with sequence similarity 3, member C

Calculated MW:

25 kDa

Observed MW:

25 kDa

Purification Method:

Protein G purification

CloneNo.:

2E10D5

Recommended Dilutions:

IF/ICC 1:50-1:500

Excitation/Emission maxima wavelengths:

493 nm / 522 nm

Applications

Tested Applications:

IF/ICC

Species Specificity:

human

Positive Controls:

IF/ICC : HepG2 cells,

Background Information

FAM3C, also known as ILEI, is a secreted protein belonging to the cytokine-like protein family. FAM3C is a signaling cytokine with a GG domain, hydrophobic leader sequence and an N-terminal signal peptide. A change in expression of this protein has been noted in pancreatic cancer-derived cells. FAM3C has been involved in the epithelial to mesenchymal transition, and retinal laminar formation processes in vertebrates. Also, FAM3C may play an important role in inner ear development and thus be involved in cell differentiation and proliferation during inner ear embryogenesis.

Storage

Storage:

Store at -20°C. Avoid exposure to light. Stable for one year after shipment.

Storage Buffer:

PBS with 50% Glycerol, 0.05% Proclin300, 0.5% BSA, pH 7.3.

Aliquoting is unnecessary for -20°C storage

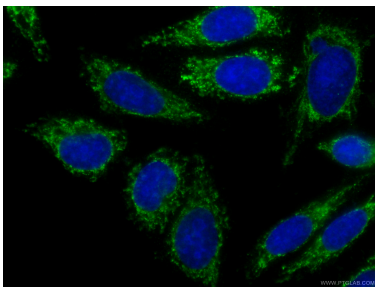
For technical support and original validation data for this product please contact:

T: 1 (888) 4PTGLAB (1-888-478-4522) (toll free in USA), or 1(312) 455-8498 (outside USA)

E: proteintech@ptglab.com
W: ptglab.com

This product is exclusively available under Proteintech Group brand and is not available to purchase from any other manufacturer.

Selected Validation Data



Immunofluorescent analysis of (-20°C Ethanol) fixed HepG2 cells using CL488-60282 (FAM3C antibody) at dilution of 1:100.