

For Research Use Only

CoraLite® Plus 488-conjugated SCGF Monoclonal antibody



Catalog Number: CL488-60295

Basic Information

Catalog Number: CL488-60295	GenBank Accession Number: BC005810	Purification Method: Protein A purification
Size: 100ul	GeneID (NCBI): 6320	CloneNo.: 4H11E4
Source: Mouse	Full Name: C-type lectin domain family 11, member A	Recommended Dilutions: IF 1:50-1:500
Isotype: IgG2b	Calculated MW: 36 kDa	Excitation/Emission maxima wavelengths: 493 nm / 522 nm
Immunogen Catalog Number: AG21365	Observed MW: 36 kDa	

Applications

Tested Applications: IF	Positive Controls: IF : HepG2 cells,
Species Specificity: human	

Background Information

CLEC11A, also named as CLECSF3, LSLCL, SCGF and p47, stimulates the proliferation and differentiation of hematopoietic precursor cells from various lineages, including erythrocytes, lymphocytes, granulocytes and macrophages. CLEC11A acts synergistically with other cytokines, including IL-3, GCSF, GMCSF and FLT3 ligand. It suppresses SCF-stimulated erythrocyte proliferation.

Storage

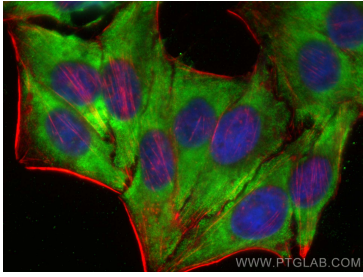
Storage:
Store at -20°C. Avoid exposure to light. Stable for one year after shipment.
Storage Buffer:
PBS with 50% Glycerol, 0.05% Proclin300, 0.5% BSA, pH 7.3.
Aliquoting is unnecessary for -20°C storage

*** 20ul sizes contain 0.1% BSA

For technical support and original validation data for this product please contact:
T: 1 (888) 4PTGLAB (1-888-478-4522) (toll free in USA), or 1(312) 455-8498 (outside USA)
E: proteintech@ptglab.com
W: ptglab.com

This product is exclusively available under Proteintech Group brand and is not available to purchase from any other manufacturer.

Selected Validation Data



Immunofluorescent analysis of (-20°C Ethanol) fixed HepG2 cells using CoraLite® Plus 488 SCGF antibody (CL488-60295, Clone: 4H11E4) at dilution of 1:200, CL594-phalloidin (red).