

For Research Use Only

# CoraLite® Plus 488-conjugated SGTA Monoclonal antibody



Catalog Number: CL488-60305

## Basic Information

<b>Catalog Number:</b> CL488-60305	<b>GenBank Accession Number:</b> BC008885	<b>Purification Method:</b> Protein A purification
<b>Size:</b> 100ul , Concentration: 1000 µg/ml by Nanodrop;	<b>GeneID (NCBI):</b> 6449	<b>CloneNo.:</b> 3B10B11
<b>Source:</b> Mouse	<b>Full Name:</b> small glutamine-rich tetra tricopeptide repeat (TPR)- containing, alpha	<b>Recommended Dilutions:</b> IF 1:200-1:800
<b>Isotype:</b> IgG2b	<b>Calculated MW:</b> 34 kDa	<b>Excitation/Emission maxima wavelengths:</b> 493 nm / 522 nm
<b>Immunogen Catalog Number:</b> AG1475	<b>Observed MW:</b> 34-37 kDa	

## Applications

<b>Tested Applications:</b> IF	<b>Positive Controls:</b> IF : HeLa cells,
<b>Species Specificity:</b> human, mouse	

## Background Information

Small glutamine-rich tetra tricopeptide repeat-containing protein alpha (SGTA) is a steroid receptor molecular co-chaperone critical in a range of biological processes, including viral infection, cell division, mitosis, and cell cycle checkpoint activation. Overexpression of SGTA has been found in various cancers, including prostate/ovary/testis/liver/lung cancer.

## Storage

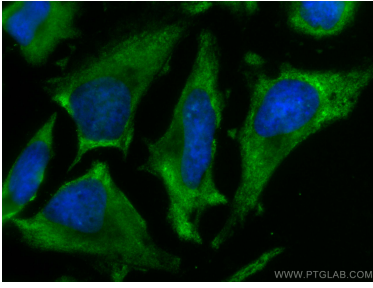
**Storage:**  
Store at -20°C. Avoid exposure to light. Stable for one year after shipment.  
**Storage Buffer:**  
PBS with 50% Glycerol, 0.05% Proclin300, 0.5% BSA, pH 7.3.  
Aliquoting is unnecessary for -20°C storage

\*\*\* 20ul sizes contain 0.1% BSA

For technical support and original validation data for this product please contact:  
T: 1 (888) 4PTGLAB (1-888-478-4522) (toll free in USA), or 1(312) 455-8498 (outside USA)  
E: proteintech@ptglab.com  
W: ptglab.com

This product is exclusively available under Proteintech Group brand and is not available to purchase from any other manufacturer.

## Selected Validation Data



Immunofluorescent analysis of (-20°C Methanol) fixed HeLa cells using CoraLite® Plus 488 SGTA antibody (CL488-60305, Clone: 3B10B11 ) at dilution of 1:400.