

For Research Use Only

CoraLite® Plus 488-conjugated IL-1F10 Monoclonal antibody



Catalog Number:CL488-60319

Basic Information

Catalog Number: CL488-60319	GenBank Accession Number: BC103966	Purification Method: Protein G purification
Size: 100ul , Concentration: 1000 µg/ml by Nanodrop;	GeneID (NCBI): 84639	CloneNo.: 5B2F5
Source: Mouse	Full Name: interleukin 1 family, member 10 (theta)	Excitation/Emission maxima wavelengths: 493 nm / 522 nm
Isotype: IgG1	Calculated MW: 152 aa, 17 kDa	
Immunogen Catalog Number: AG17250		

Applications

Tested Applications:
FC (Intra)

Species Specificity:
human

Background Information

IL1F10 is a member of the interleukin 1 cytokine family. This cytokine is thought to participate in a network of interleukin 1 family members to regulate adapted and innate immune responses.

Storage

Storage:
Store at -20°C. Avoid exposure to light. Stable for one year after shipment.

Storage Buffer:
PBS with 50% Glycerol, 0.05% Proclin300, 0.5% BSA, pH 7.3.

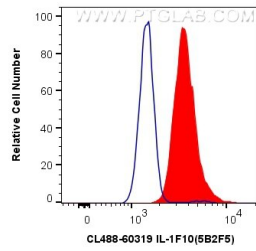
Aliquoting is unnecessary for -20°C storage

***** 20ul sizes contain 0.1%BSA**

For technical support and original validation data for this product please contact:
T: 1 (888) 4PTGLAB (1-888-478-4522) (toll free in USA), or 1(312) 455-8498 (outside USA) E: proteintech@ptglab.com W: ptglab.com

This product is exclusively available under Proteintech Group brand and is not available to purchase from any other manufacturer.

Selected Validation Data



1X10⁶ U-937 cells were intracellularly stained with 0.4 ug CoraLite® Plus 488 Anti-Human IL-1F10 (CL488-60319, Clone:5B2F5) (red), or 0.4 ug Control Antibody. Cells were fixed with 4% PFA and permeabilized with Flow Cytometry Perm Buffer (PF00011-C).