

For Research Use Only

# CoraLite® Plus 488-conjugated E-cadherin Monoclonal antibody

Catalog Number: CL488-60335

Featured Product



## Basic Information

Catalog Number:

CL488-60335

Size:

100ul, Concentration: 1000 ug/ml by 999 Nanodrop;

Source:

Mouse

Isotype:

IgG2b

Immunogen Catalog Number:

AG15085

GenBank Accession Number:

BC141838

GeneID (NCBI):

999

UNIPROT ID:

P12830

Full Name:

cadherin 1, type 1, E-cadherin (epithelial)

Calculated MW:

882 aa, 97 kDa

Observed MW:

120 kDa

Purification Method:

Protein A purification

CloneNo.:

6B11F11

Recommended Dilutions:

IF-P 1:50-1:500

IF/ICC 1:50-1:500

Excitation/Emission maxima wavelengths:

493 nm / 522 nm

## Applications

Tested Applications:

IF/ICC, IF-P

Species Specificity:

human, pig

Positive Controls:

IF-P: human breast cancer tissue,

IF/ICC: MCF-7 cells,

## Background Information

Cadherins are a family of transmembrane glycoproteins that mediate calcium-dependent cell-cell adhesion and play an important role in the maintenance of normal tissue architecture. E-cadherin (epithelial cadherin), also known as CDH1 (cadherin 1) or CAM 120/80, is a classical member of the cadherin superfamily which also include N-, P-, R-, and B-cadherins. E-cadherin is expressed on the cell surface in most epithelial tissues. The extracellular region of E-cadherin establishes calcium-dependent homophilic trans binding, providing specific interaction with adjacent cells, while the cytoplasmic domain is connected to the actin cytoskeleton through the interaction with p120-,  $\alpha$ -,  $\beta$ -, and  $\gamma$ -catenin (plakoglobin). E-cadherin is important in the maintenance of the epithelial integrity, and is involved in mechanisms regulating proliferation, differentiation, and survival of epithelial cell. E-cadherin may also play a role in tumorigenesis. It is considered to be an invasion suppressor protein and its loss is an indicator of high tumor aggressiveness.

## Storage

Storage:

Store at -20°C. Avoid exposure to light. Stable for one year after shipment.

Storage Buffer:

PBS with 50% Glycerol, 0.05% Proclin300, 0.5% BSA, pH 7.3.

Aliquoting is unnecessary for -20°C storage

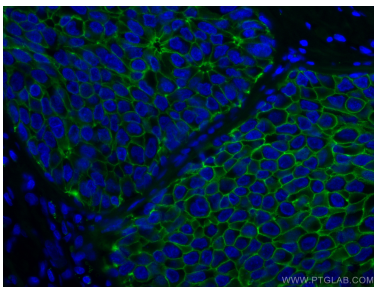
For technical support and original validation data for this product please contact:

T: 1 (888) 4PTGLAB (1-888-478-4522) (toll free in USA), or 1(312) 455-8498 (outside USA)

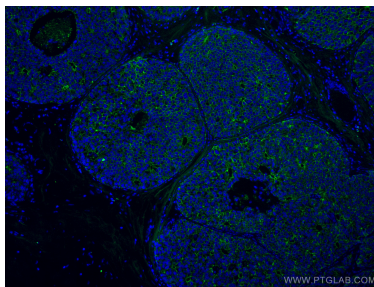
E: [proteintech@ptglab.com](mailto:proteintech@ptglab.com)  
W: [ptglab.com](http://ptglab.com)

This product is exclusively available under Proteintech Group brand and is not available to purchase from any other manufacturer.

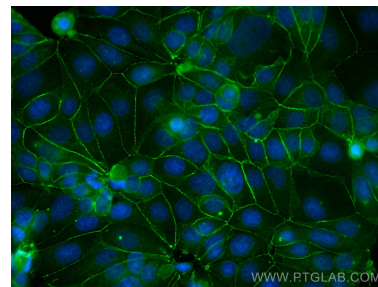
## Selected Validation Data



Immunofluorescent analysis of (4% PFA) fixed human breast cancer tissue using CoraLite® Plus 488 E-cadherin antibody (CL488-60335, Clone: 6B11F11 ) at dilution of 1:200.



Immunofluorescent analysis of (4% PFA) fixed human breast cancer tissue using CoraLite® Plus 488 E-cadherin antibody (CL488-60335, Clone: 6B11F11 ) at dilution of 1:200.



Immunofluorescent analysis of (-20°C Methanol) fixed MCF-7 cells using CoraLite® Plus 488 E-cadherin antibody (CL488-60335, Clone: 6B11F11 ) at dilution of 1:200.