

For Research Use Only

CoraLite® Plus 488-conjugated Prostein Monoclonal antibody



Catalog Number: **CL488-60343**

Basic Information

Catalog Number: CL488-60343	GenBank Accession Number: BC050416	Purification Method: Protein A purification
Size: 100ul , Concentration: 1000 µg/ml by Nanodrop;	GeneID (NCBI): 85414	CloneNo.: 5E12E2
Source: Mouse	UNIPROT ID: Q96JT2	Recommended Dilutions: IF-P 1:50-1:500
Isotype: IgG2b	Full Name: solute carrier family 45, member 3	Excitation/Emission maxima wavelengths: 493 nm / 522 nm
Immunogen Catalog Number: AG5463	Calculated MW: 59 kDa	
	Observed MW: 55-59 kDa	

Applications

Tested Applications: IF	Positive Controls: IF-P : human prostate cancer tissue,
Species Specificity: human	

Background Information

Prostein is a prostate tissue-specific protein whose expression is highly restricted to normal and cancerous prostate tissues. Anti-prostein is useful for the identification of prostate adenocarcinomas and is a good marker to identify prostatic origin in metastatic cancer.

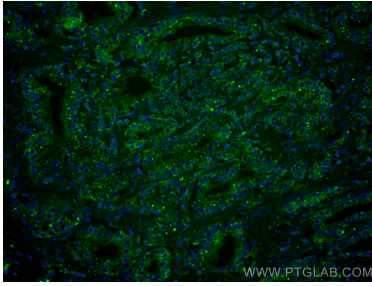
Storage

Storage:
Store at -20°C. Avoid exposure to light.
Storage Buffer:
PBS with 50% Glycerol, 0.05% Proclin300, 0.5% BSA, pH 7.3.
Aliquoting is unnecessary for -20°C storage

For technical support and original validation data for this product please contact:
T: 1 (888) 4PTGLAB (1-888-478-4522) (toll free in USA), or 1(312) 455-8498 (outside USA)
E: proteintech@ptglab.com
W: ptglab.com

This product is exclusively available under Proteintech Group brand and is not available to purchase from any other manufacturer.

Selected Validation Data



Immunofluorescent analysis of (4% PFA) fixed human prostate cancer tissue using CoraLite® Plus 488 Protein antibody (CL488-60343, Clone: 5E12E2) at dilution of 1:200.