

For Research Use Only

CoraLite® Plus 488 Anti-Mouse CD31 (390)



Catalog Number: **CL488-65058**

Basic Information

Catalog Number: CL488-65058	GenBank Accession Number: BC008519	Purification Method: Affinity purification
Size: 100ug , 0.5 mg/ml	GeneID (NCBI): 18613	CloneNo.: 390
Source: Rat	UNIPROT ID: Q08481	Recommended Dilutions: IF/ICC 1:50-1:500
Isotype: IgG2a, kappa	Full Name: platelet/endothelial cell adhesion molecule 1	Excitation/Emission maxima wavelengths: 493 nm / 522 nm

Applications

Tested Applications: IF, FC	Positive Controls: IF/ICC : bEnd.3 cells,
Species Specificity: Mouse	

Background Information

Platelet endothelial cell adhesion molecule-1 (PECAM-1, CD31) is a member of the immunoglobulin gene superfamily of cell adhesion molecules. CD31 is a transmembrane glycoprotein that is highly expressed on the surface of the endothelium, making up a large portion of its intracellular junctions. PECAM-1 is also present on the surface of hematopoietic cells and immune cells including platelets, monocytes, neutrophils, natural killer cells, megakaryocytes and some types of T-cell (PMID: 9011572). As well as its role in cell-cell adhesion, PECAM-1 functions as a signaling receptor, and is involved in important physiological events such as nitric oxide production, regulation of T-cell immunity and tolerance, leukocyte transendothelial migration and inflammation and angiogenesis (PMID: 21183735; 20978210; 17872453; 20634489).

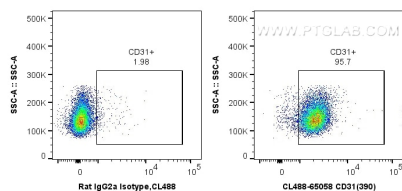
Storage

Storage:
Store at 2-8°C. Avoid exposure to light. Stable for one year after shipment.
Storage Buffer:
PBS with 0.1% sodium azide and 0.5% BSA, pH 7.3.

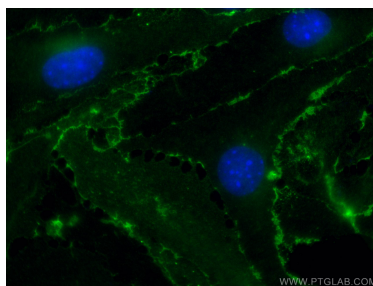
For technical support and original validation data for this product please contact:
T: 1 (888) 4PTGLAB (1-888-478-4522) (toll free in USA), or 1(312) 455-8498 (outside USA)
E: proteintech@ptglab.com
W: ptglab.com

This product is exclusively available under Proteintech Group brand and is not available to purchase from any other manufacturer.

Selected Validation Data



1X10⁶ BALB/C mouse splenocytes were surface stained with 0.5 ug CoraLite® Plus 488 Anti-Mouse CD31 (CL488-65058, Clone:390), or 0.5 ug CoraLite® Plus 488 Rat IgG2a Isotype Control (2A3) (CL488-65209, Clone: 2A3). Cells were not fixed.



Immunofluorescent analysis of (4% PFA) fixed bEnd.3 cells using CoraLite® Plus 488 CD31 antibody (CL488-65058, Clone: 390) at dilution of 1:100.