

For Research Use Only

# CoraLite® Plus 488 Anti-Mouse CD45 (30-F11)

Catalog Number: **CL488-65087**



## Basic Information

<b>Catalog Number:</b> CL488-65087	<b>GenBank Accession Number:</b> BC028512	<b>Purification Method:</b> Affinity purification
<b>Size:</b> 100tests , 5 µl/test	<b>GeneID (NCBI):</b> 19264	<b>CloneNo.:</b> 30-F11
<b>Source:</b> Rat	<b>Full Name:</b> protein tyrosine phosphatase, receptor type, C	<b>Recommended Dilutions:</b> IF 1:200-1:800
<b>Isotype:</b> IgG2b		<b>Excitation/Emission maxima wavelengths:</b> 493 nm / 522 nm

## Applications

<b>Tested Applications:</b> FC, IF	<b>Positive Controls:</b> IF : mouse splenocytes,
<b>Species Specificity:</b> Mouse	

## Background Information

CD45, also known as protein tyrosine phosphatase, receptor type C, is a type I transmembrane protein expressed on the surface of all haematopoietic cells with the exception of erythrocytes and platelets (PMID: 3489673; 28615666). CD45 is a pan-haematopoietic cell marker and has been shown to be essential for T- and B-cell activation and signalling (PMID: 9429890; 16378097).

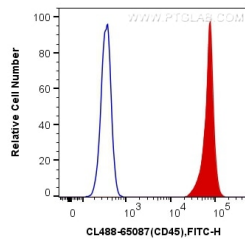
## Storage

**Storage:**  
Store at 2-8°C. Avoid exposure to light.  
**Storage Buffer:**  
PBS with 0.1% sodium azide and 0.5% BSA, pH 7.3.

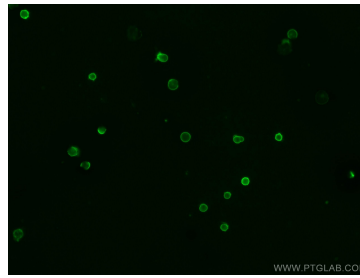
For technical support and original validation data for this product please contact:  
T: 1 (888) 4PTGLAB (1-888-478-4522) (toll free in USA), or 1(312) 455-8498 (outside USA)  
E: [proteintech@ptglab.com](mailto:proteintech@ptglab.com)  
W: [ptglab.com](http://ptglab.com)

This product is exclusively available under Proteintech Group brand and is not available to purchase from any other manufacturer.

## Selected Validation Data



1X10<sup>6</sup> C57BL/6 mouse splenocytes were surface stained with 5  $\mu$ l CoraLite® Plus 488 Anti-Mouse CD45 (CL488-65087, Clone: 30-F11) (red) or Control Antibody. Cells were not fixed.



Immunofluorescent analysis of mouse splenocytes using CoraLite® Plus 488-conjugated Anti-Mouse CD45 (CL488-65087, Clone: 30-F11) at dilution of 1:400.