

For Research Use Only

CoraLite® Plus 488 Anti-Human CD16 (3G8)



Catalog Number: CL488-65090

Basic Information

Catalog Number:

CL488-65090

Size:

100 tests, 5 µl/test

Source:

Mouse

Isotype:

IgG1, kappa

GenBank Accession Number:

BC017865

GeneID (NCBI):

2214

ENSEMBL Gene ID:

ENSG00000203747

Full Name:

Fc fragment of IgG, low affinity IIIa, receptor (CD16a)

Calculated MW:

254 aa, 29 kDa

Purification Method:

Affinity purification

CloneNo.:

3G8

Excitation/Emission maxima wavelengths:

493 nm / 522 nm

Applications

Tested Applications:

FC

Species Specificity:

Human

Background Information

CD16 is a 50-70-kDa low affinity Fc receptor found on the surface of natural killer cells, neutrophil polymorphonuclear leukocytes, monocytes and macrophages. CD16 mediates antibody-dependent cellular cytotoxicity (ADCC) and other antibody-dependent responses, such as phagocytosis. CD16 has been identified as Fc receptors FcγRIIIa (CD16a) and FcγRIIIb (CD16b), encoded by two nearly identical genes, FCGR3A and the FCGR3B. Clone 3G8 recognizes both the CD16a and CD16b (PMID: 7592758).

Storage

Storage:

Store at 2-8°C. Avoid exposure to light. Stable for one year after shipment.

Storage Buffer:

PBS with 0.1% sodium azide and 0.5% BSA, pH 7.3.

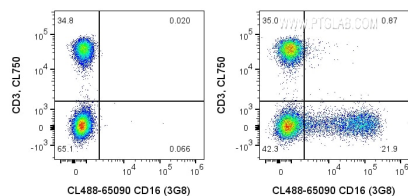
For technical support and original validation data for this product please contact:

T: 1 (888) 4PTGLAB (1-888-478-4522) (toll free in USA), or 1(312) 455-8498 (outside USA)

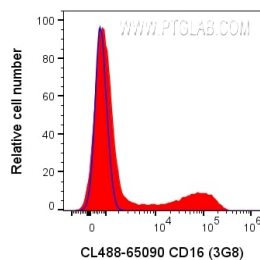
E: proteintech@ptglab.com
W: ptglab.com

This product is exclusively available under Proteintech Group brand and is not available to purchase from any other manufacturer.

Selected Validation Data



1X10⁶ human PBMCs were surface stained with CL750 Anti-Human CD3 and 5 ul CoraLite® Plus 488 Anti-Human CD16 (CL488-65090, Clone:3G8), or Mouse IgG1 Isotype Control. Cells were not fixed. Lymphocytes were gated.



1X10⁶ human PBMCs were surface stained with 5 ul CoraLite® Plus 488 Anti-Human CD16 (CL488-65090, Clone:3G8), or Mouse IgG1 Isotype Control. Cells were not fixed. Lymphocytes were gated.