

For Research Use Only

CoraLite® Plus 488 Anti-Human CD161 (HP-3G10)



Catalog Number: **CL488-65115**

Basic Information

Catalog Number:

CL488-65115

Size:

100tests , 5 µl/test

Source:

Mouse

Isotype:

IgG1, kappa

GenBank Accession Number:

BC114516

GeneID (NCBI):

3820

ENSEMBL Gene ID:

ENSG00000111796

UNIPROT ID:

Q12918

Full Name:

killer cell lectin-like receptor
subfamily B, member 1

Calculated MW:

225 aa, 25 kDa

Purification Method:

Affinity purification

CloneNo.:

HP-3G10

Excitation/Emission maxima
wavelengths:

493 nm / 522 nm

Applications

Tested Applications:

FC

Species Specificity:

Human

Storage

Storage:

Store at 2-8°C. Avoid exposure to light. Stable for one year after shipment.

Storage Buffer:

PBS with 0.1% sodium azide and 0.5% BSA, pH 7.3.

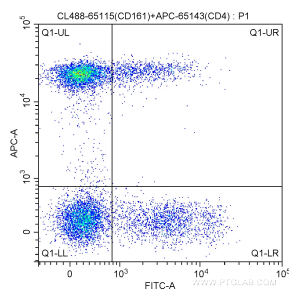
For technical support and original validation data for this product please contact:

T: 1 (888) 4PTGLAB (1-888-478-4522) (toll free
in USA), or 1(312) 455-8498 (outside USA)

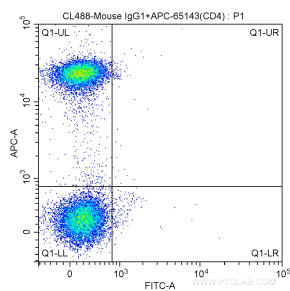
E: proteintech@ptglab.com
W: ptglab.com

This product is exclusively available under Proteintech Group brand and is not available to purchase from any other manufacturer.

Selected Validation Data



100 ul human peripheral blood were surface stained with APC-Anti-Human CD4 (APC-65143, Clone: RPA-T4) and 5.00 ul CoraLite® Plus 488-conjugated Anti-Human CD161 (CL488-65115, Clone:HP-3G10). Lymphocytes were gated for analysis. Cells were not fixed.



100 ul human peripheral blood were surface stained with APC-Anti-Human CD4 (APC-65143, Clone: RPA-T4) and CoraLite® Plus 488-conjugated Mouse IgG1 isotype control antibody. Lymphocytes were gated for analysis. Cells were not fixed.