

For Research Use Only

CoraLite® Plus 488 Mouse IgG1 Isotype Control (MOPC-21)



Catalog Number: **CL488-65124**

Basic Information

Catalog Number: CL488-65124	GenBank Accession Number: GeneID (NCBI): 16017	Purification Method: Affinity purification
Size: 100ug, 0.5 mg/mL	Full Name: immunoglobulin heavy constant gamma 1 (G1m marker)	CloneNo.: MOPC-21
Source: Mouse		Excitation/Emission maxima wavelengths: 493 nm / 522 nm
Isotype: IgG1		

Applications

Tested Applications:
FC
Species Specificity:

Background Information

The MOPC-21 immunoglobulin is useful as an isotype-matched control. The MOPC-21 immunoglobulin has an unknown binding specificity and is used as an isotype control for mouse IgG1 antibodies. This antibody has been quality-tested for flow cytometry as negative control.

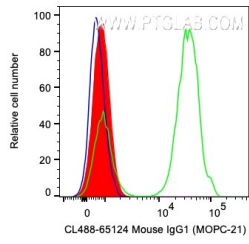
Storage

Storage:
Store at 2-8°C. Avoid exposure to light. Stable for one year after shipment.
Storage Buffer:
PBS with 0.1% sodium azide and 0.5% BSA, pH 7.3.

For technical support and original validation data for this product please contact:
T: 1 (888) 4PTGLAB (1-888-478-4522) (toll free in USA), or 1(312) 455-8498 (outside USA) E: proteintech@ptglab.com
W: ptglab.com

This product is exclusively available under Proteintech Group brand and is not available to purchase from any other manufacturer.

Selected Validation Data



1X10⁶ human PBMCs were surface stained with 0.2 ug CoraLite® Plus 488 Anti-Mouse IgG1 Isotype Control (CL488-65124, Clone: MOPC-21) (red), CL488 Anti-Human CD3 (green), or unstained (blue). Cells were not fixed. Lymphocytes were gated.