

For Research Use Only

# CoraLite® Plus 488 Mouse IgG2b Isotype Control (MPC-11)



Catalog Number: **CL488-65128**

## Basic Information

Catalog Number: CL488-65128	GenBank Accession Number: GeneID (NCBI): 16016	Purification Method: Affinity purification
Size: 100ug, 0.2 mg/mL	Full Name: immunoglobulin heavy chain 3 (serum IgG2b)	CloneNo.: MPC-11
Source: Mouse		Excitation/Emission maxima wavelengths: 493 nm / 522 nm
Isotype: IgG2b		

## Applications

Tested Applications:  
FC  
  
Species Specificity:

## Background Information

The MPC-11 immunoglobulin is useful as an isotype-matched control. The MPC-11 immunoglobulin has an unknown binding specificity and is used as an isotype control for mouse IgG2b antibodies. This antibody has been quality-tested for flow cytometry as negative control.

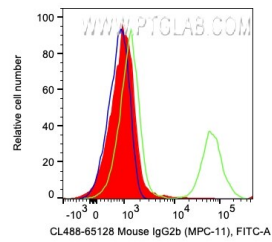
## Storage

Storage:  
Store at 2-8°C. Avoid exposure to light. Stable for one year after shipment.  
Storage Buffer:  
PBS with 0.1% sodium azide and 0.5% BSA, pH 7.3.

For technical support and original validation data for this product please contact:  
T: 1 (888) 4PTGLAB (1-888-478-4522) (toll free in USA), or 1(312) 455-8498 (outside USA)  
E: [proteintech@ptglab.com](mailto:proteintech@ptglab.com)  
W: [ptglab.com](http://ptglab.com)

This product is exclusively available under Proteintech Group brand and is not available to purchase from any other manufacturer.

## Selected Validation Data



1X10<sup>6</sup> human PBMCs were surface stained with 0.2 ug CoraLite® Plus 488 Anti-Mouse IgG2b Isotype Control (CL488-65128, Clone:MPC-11) (red), or CL488 Anti-Human CD20 (green), or unstained (blue). Cells were not fixed. Lymphocytes were gated.