

For Research Use Only

CoraLite® Plus 488 Anti-Mouse CD4 (RM4-5)



Catalog Number: **CL488-65141**

2 Publications

Basic Information

Catalog Number:

CL488-65141

Size:

100ug, 0.5 mg/ml

Source:

Rat

Isotype:

IgG2a, kappa

GenBank Accession Number:

BC039137

GeneID (NCBI):

12504

Full Name:

CD4 antigen

Purification Method:

Affinity purification

CloneNo.:

RM4-5

Recommended Dilutions:

IF/ICC 1:250-1:1000

Excitation/Emission maxima wavelengths:

493 nm / 522 nm

Applications

Tested Applications:

IF, FC

Cited Applications:

IF

Species Specificity:

Mouse

Cited Species:

mouse

Positive Controls:

IF/ICC : mouse splenocytes,

Background Information

CD4 is a 55-kDa transmembrane glycoprotein expressed on T helper cells, majority of thymocytes, monocytes, macrophages, and dendritic cells (PMID: 9304802; 12213222). CD4 is an accessory protein for MHC class-II antigen/T-cell receptor interaction. It plays an important role in T helper cell development and activation (PMID: 9539765; 3112582). CD4 serves as a receptor for the human immunodeficiency virus (HIV) (PMID: 9304802).

Notable Publications

Author	Pubmed ID	Journal	Application
Xinyan Zhou	36171212	Nat Commun	IF
Yuqi Yang	38291473	Cell Commun Signal	IF

Storage

Storage:

Store at 2-8°C. Avoid exposure to light. Stable for one year after shipment.

Storage Buffer:

PBS with 0.1% sodium azide and 0.5% BSA, pH 7.3.

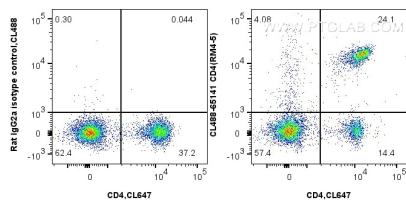
For technical support and original validation data for this product please contact:

T: 1 (888) 4PTGLAB (1-888-478-4522) (toll free in USA), or 1(312) 455-8498 (outside USA)

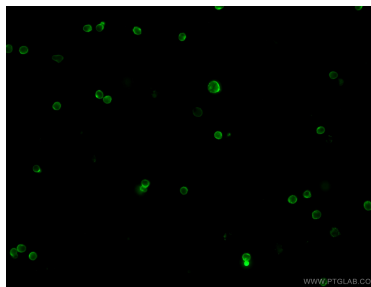
E: proteintech@ptglab.com
W: ptglab.com

This product is exclusively available under Proteintech Group brand and is not available to purchase from any other manufacturer.

Selected Validation Data



1x10⁶ mouse splenocytes were surface stained with 0.25 ug CoraLite® Plus 488 Anti-Mouse CD4 (RM4-5) (CL488-65141, Clone:RM4-5) or 0.25 ug CoraLite® Plus 488 Rat IgG2a Isotype Control (2A3) (CL488-65209, Clone: 2A3), and 0.25 ug CoraLite® Plus 647 Anti-Mouse CD3 (17A2) (CL647-65077, Clone: 17A2). Cells were not fixed.



Immunofluorescent analysis of mouse splenocytes using CoraLite® Plus 488-conjugated Anti-Mouse CD4 (CL488-65141, Clone: RM4-5) at dilution of 1:500.