

For Research Use Only

# CoraLite® Plus 488 Anti-Human CD45RO (UCHL1)



Catalog Number: **CL488-65150**

## Basic Information

Catalog Number:

CL488-65150

Size:

100tests , 5 µl/test

Source:

Mouse

Isotype:

IgG2a, kappa

GenBank Accession Number:

BC014239

GeneID (NCBI):

5788

ENSEMBL Gene ID:

ENSG00000081237

UNIPROT ID:

P08575

Full Name:

protein tyrosine phosphatase,  
receptor type, C

Purification Method:

Affinity purification

CloneNo.:

UCHL1

Recommended Dilutions:

IF/ICC 1:150-1:600

Excitation/Emission maxima  
wavelengths:

493 nm / 522 nm

## Applications

Tested Applications:

IF/ICC, FC

Species Specificity:

human

Positive Controls:

IF/ICC : human peripheral blood mononuclear cells,

## Background Information

CD45, also known as protein tyrosine phosphatase, receptor type C, is a type I transmembrane protein expressed on the surface of all haematopoietic cells with the exception of erythrocytes and platelets (PMID: 3489673; 28615666). CD45 is a pan-haematopoietic cell marker and has been shown to be essential for T- and B-cell activation and signalling (PMID: 9429890; 16378097). CD45 exists as multiple isoforms due to alternative splicing of three exons (4, 5, and 6, designated A, B, and C) in the extracellular domain (PMID: 12414720). CD45RO is the shortest CD45 isoform (lacking all three exons) and is expressed by activated and memory T cells, thymocytes, some B cells, and weakly on granulocytes and macrophage (PMID: 27100180; 12414720).

## Storage

Storage:

Store at 2-8°C. Avoid exposure to light. Stable for one year after shipment.

Storage Buffer:

PBS with 0.1% sodium azide and 0.5% BSA, pH 7.3.

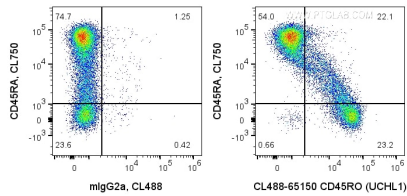
For technical support and original validation data for this product please contact:

T: 1 (888) 4PTGLAB (1-888-478-4522) (toll free  
in USA), or 1(312) 455-8498 (outside USA)

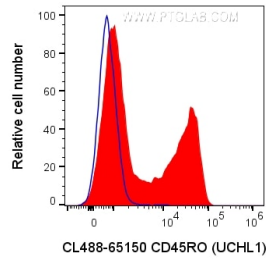
E: [proteintech@ptglab.com](mailto:proteintech@ptglab.com)  
W: [ptglab.com](http://ptglab.com)

This product is exclusively available under Proteintech Group brand and is not available to purchase from any other manufacturer.

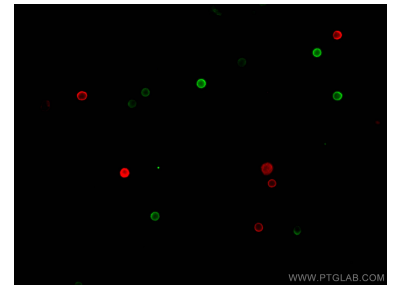
## Selected Validation Data



1X10<sup>6</sup> human PBMCs were surface co-stained with CL750 Anti-Human CD45RA and 5 ul CoraLite® Plus 488 Anti-Human CD45RO (CL488-65150, Clone:UCHL1), or Mouse IgG2a Isotype Control. Cells were not fixed. Lymphocytes were gated.



1X10<sup>6</sup> human PBMCs were surface stained with 5 ul CoraLite® Plus 488 Anti-Human CD45RO (CL488-65150, Clone:UCHL1), or Mouse IgG2a Isotype Control. Cells were not fixed. Lymphocytes were gated.



Immunofluorescent analysis of human peripheral blood mononuclear cells (PBMCs) using APC Anti-Human CD45RA (APC-65108, Clone: HI100) and CoraLite® Plus 488-conjugated Anti-Human CD45RO (CL488-65150, Clone: UCHL1) at dilution of 1:300.