

For Research Use Only

# CoraLite® Plus 488 Anti-Human MICA/MICB (6D4)



Catalog Number: **CL488-65161**

## Basic Information

### Catalog Number:

CL488-65161

### Size:

100 tests, 5 ul/test

### Source:

Mouse

### Isotype:

IgG2a, kappa

### GenBank Accession Number:

BC016929

### GeneID (NCBI):

100507436

### UNIPROT ID:

Q29983

### Full Name:

MHC class I polypeptide-related sequence A

### Calculated MW:

383 aa, 43 kDa

### Purification Method:

Purified by protein-A affinity chromatography

### CloneNo.:

6D4

### Excitation/Emission maximum wavelengths:

493 nm / 522 nm

## Applications

### Tested Applications:

FC

### Species Specificity:

Human

## Background Information

Human MHC class I chain-related genes located within the HLA class I region of chromosome 6 encode MHC class I chain-related A and B (MICA and MICB) (PMID: 11429322). MICA and MICB are stress-inducible surface molecules that are not associated with  $\beta$ 2-microglobulin and do not present peptides (PMID: 9497295). They are expressed in intestinal epithelium and many epithelial tumors (PMID: 10359807). MICA and MICB are ligands for NKG2D which is an activating receptor that is expressed on most natural killer (NK) cells, CD8  $\alpha\beta$  T cells, and  $\gamma\delta$  T cells (PMID: 10426993; 11491531). The monoclonal antibody 6D4 recognizes MICA and MICB.

## Storage

### Storage:

Store at 2-8°C. Avoid exposure to light. Stable for one year after shipment.

### Storage Buffer:

PBS with 0.09% sodium azide and 0.5% BSA.

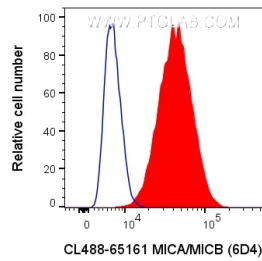
For technical support and original validation data for this product please contact:

T: 1 (888) 4PTGLAB (1-888-478-4522) (toll free in USA), or 1(312) 455-8498 (outside USA)

E: [proteintech@ptglab.com](mailto:proteintech@ptglab.com)  
W: [ptglab.com](http://ptglab.com)

This product is exclusively available under Proteintech Group brand and is not available to purchase from any other manufacturer.

## Selected Validation Data



$1 \times 10^6$  HeLa cells were surface stained with 5  $\mu$ l CoraLite® Plus 488 Anti-Human MICA/MICB (CL488-65161, Clone:6D4) (red), or Mouse IgG2a Isotype Control (blue). Cells were not fixed.