

CoraLite® Plus 488 Anti-Human PD-1/CD279 (EH12.2H7)

Catalog Number: **CL488-65168**

Basic Information

Catalog Number:

CL488-65168

Size:

100 tests, 5 ul/test

Source:

Mouse

Isotype:

IgG1, kappa

GenBank Accession Number:

BC074740

GeneID (NCBI):

5133

UNIPROT ID:

Q15116

Full Name:

programmed cell death 1

Calculated MW:

288 aa, 32 kDa

Purification Method:

Affinity purification

CloneNo.:

EH12.2H7

Excitation/Emission maxima wavelengths:

493 nm / 522 nm

Applications

Tested Applications:

FC

Species Specificity:

Non-human primates, Human

Background Information

Programmed cell death 1 (PD-1, also known as CD279) is an immunoinhibitory receptor that belongs to the CD28/CTLA-4 subfamily of the Ig superfamily. It is a 288 amino acid (aa) type I transmembrane protein composed of one Ig superfamily domain, a stalk, a transmembrane domain, and an intracellular domain containing an immunoreceptor tyrosine-based inhibitory motif (ITIM) as well as an immunoreceptor tyrosine-based switch motif (ITSM) (PMID: 18173375). PD-1 is expressed during thymic development and is induced in a variety of hematopoietic cells in the periphery by antigen receptor signaling and cytokines (PMID: 20636820). Engagement of PD-1 by its ligands PD-L1 or PD-L2 transduces a signal that inhibits T-cell proliferation, cytokine production, and cytolytic function (PMID: 19426218). It is critical for the regulation of T cell function during immunity and tolerance. Blockade of PD-1 can overcome immune resistance and also has been shown to have antitumor activity (PMID: 22658127; 23169436).

Storage

Storage:

Store at 2-8°C. Avoid exposure to light. Stable for one year after shipment.

Storage Buffer:

PBS with 0.09% sodium azide and 0.5% BSA.

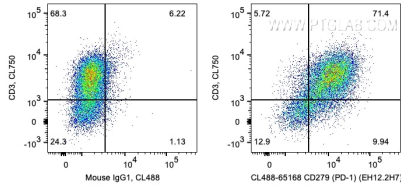
For technical support and original validation data for this product please contact:

T: 1 (888) 4PTGLAB (1-888-478-4522) (toll free in USA), or 1(312) 455-8498 (outside USA)

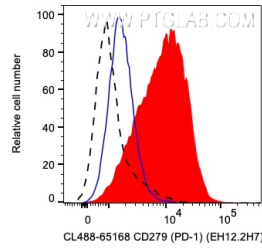
E: proteintech@ptglab.com
W: ptglab.com

This product is exclusively available under Proteintech Group brand and is not available to purchase from any other manufacturer.

Selected Validation Data



1X10⁶ PHA treated human PBMCs were surface co-stained with CL750 Anti-Human CD3 and 5 ul CoraLite® Plus 488 Anti-Human PD-1/CD279 (CL488-65168, Clone:EH12.2H7) or CoraLite® Plus 488 Mouse IgG1 Isotype Control (MOPC-21) (CL488-65124, Clone: MOPC-21). Cells were not fixed.



1X10⁶ day 3 PHA treated human PBMCs were surface stained with 5 ul CoraLite® Plus 488 Anti-Human PD-1/CD279 (CL488-65168, Clone: EH12.2H7) (red) or Mouse IgG1 Isotype Control (blue). Unactivated PBMCs were surface stained with 5 ul CoraLite® Plus 488 Anti-Human PD-1/CD279 (black). Cells were not fixed. Lymphocytes were gated.