

For Research Use Only

CoraLite® Plus 488 Anti-Human CD163 (GHI/61)



Catalog Number: CL488-65169

1 Publications

Basic Information

Catalog Number:	GenBank Accession Number:	Purification Method:
CL488-65169	BC051281	Protein G purification
Size:	GeneID (NCBI):	CloneNo.:
100tests , 5 µl/test	9332	GHI/61
Source:	Full Name:	Excitation/Emission maxima wavelengths:
Mouse	CD163 molecule	493 nm / 522 nm
Isotype:	Calculated MW:	
IgG1, kappa	1156 aa, 125 kDa	

Applications

Tested Applications:
FC

Cited Applications:
FC

Species Specificity:
Human

Cited Species:
human

Background Information

CD163, also known as M130, is a membrane glycoprotein which belongs to the scavenger receptor superfamily (PMID: 8370408). It is an acute phase-regulated and signal-inducing macrophage protein expressed exclusively in monocytes and tissue macrophages (PMID: 11196644). CD163 mediates endocytosis of haptoglobin-haemoglobin complexes (PMID: 11196644). The uptake of haptoglobin by macrophages contributes to the recycling of iron and also to the inflammatory response (PMID: 22900885). Soluble CD163 (sCD163), as a result of ectodomain shedding during inflammatory activation of macrophages, circulates in blood and has been suggested as a plasma/serum marker for macrophage activity (PMID: 12570164).

Notable Publications

Author	Pubmed ID	Journal	Application
Shiyang Yuan	36168315	Oncol Lett	FC

Storage

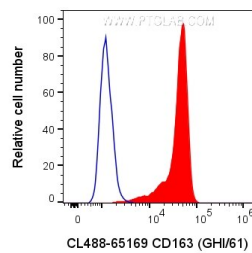
Storage:
Store at 2-8°C. Avoid exposure to light. Stable for one year after shipment.

Storage Buffer:
PBS with 0.1% sodium azide and 0.5% BSA, pH 7.3.

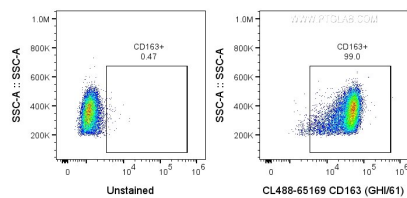
For technical support and original validation data for this product please contact:
T: 1 (888) 4PTGLAB (1-888-478-4522) (toll free in USA), or 1(312) 455-8498 (outside USA)
E: proteintech@ptglab.com
W: ptglab.com

This product is exclusively available under Proteintech Group brand and is not available to purchase from any other manufacturer.

Selected Validation Data



1X10⁶ human PBMCs were surface stained with 5 ul CoraLite® Plus 488 Anti-Human CD163 (CL488-65169, Clone:GHI/61) or unstained. Cells were not fixed. Monocytes were gated.



1X10⁶ human PBMCs were surface stained with 5 ul CoraLite® Plus 488 Anti-Human CD163 (CL488-65169, Clone:GHI/61) or unstained. Cells were not fixed. Monocytes were gated.