

For Research Use Only

# CoraLite® Plus 488 Anti-Human CD146 (P1H12)



Catalog Number: **CL488-65181**

## Basic Information

Catalog Number:

CL488-65181

Size:

100 tests, 5 µl/test

Source:

Mouse

Isotype:

IgG1, kappa

GenBank Accession Number:

BC056418

GeneID (NCBI):

4162

UNIPROT ID:

P43121

Full Name:

melanoma cell adhesion molecule

Calculated MW:

646 aa, 72 kDa

Purification Method:

Affinity purification

CloneNo.:

P1H12

Excitation/Emission maxima wavelengths:

493 nm / 522 nm

## Applications

Tested Applications:

FC

Species Specificity:

Rabbit, Canine, Mouse, Human

## Background Information

CD146, also known as melanoma cell adhesion molecule (MCAM) or MUC18, originally identified as a biomarker of melanoma progression, is a transmembrane glycoprotein of 113-130 kDa, belonging to the immunoglobulin (Ig) superfamily (PMID: 8378324; 25993332). Structurally, it consists of five Ig domains, a transmembrane domain, and a cytoplasmic region. In normal adult tissue, CD146 is primarily expressed by vascular endothelium and smooth muscle. CD146 is a key cell adhesion protein in vascular endothelial cell activity and angiogenesis, and has been used as marker of circulating endothelium cells (CECs) (PMID: 19356677). In addition to the membrane-anchored form of CD146, a soluble form of CD146 (sCD146, 105 kDa) has also been found in human plasma and in the supernatant of cultured human endothelial cells (PMID: 9462829; 19229070; 16374253; 14597988).

## Storage

Storage:

Store at 2-8°C. Avoid exposure to light. Stable for one year after shipment.

Storage Buffer:

PBS with 0.09% sodium azide and 0.5% BSA.

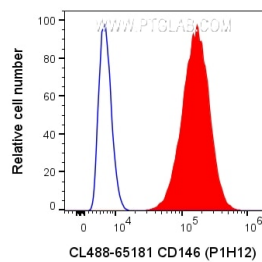
For technical support and original validation data for this product please contact:

T: 1 (888) 4PTGLAB (1-888-478-4522) (toll free in USA), or 1(312) 455-8498 (outside USA)

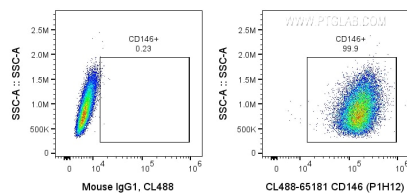
E: [proteintech@ptglab.com](mailto:proteintech@ptglab.com)  
W: [ptglab.com](http://ptglab.com)

This product is exclusively available under Proteintech Group brand and is not available to purchase from any other manufacturer.

## Selected Validation Data



1X10<sup>6</sup> A375 cells were surface stained with 5  $\mu$ l CoraLite® Plus 488 Anti-Human CD146 (CL488-65181, Clone:P1H12), or Mouse IgG1 Isotype Control. Cells were not fixed.



1X10<sup>6</sup> A375 cells were surface stained with 5  $\mu$ l CoraLite® Plus 488 Anti-Human CD146 (CL488-65181, Clone:P1H12), or Mouse IgG1 Isotype Control. Cells were not fixed.