

For Research Use Only

# CoraLite® Plus 488 Anti-Human CD18 (TS1/18)



Catalog Number: **CL488-65190**

## Basic Information

### Catalog Number:

CL488-65190

### Size:

100tests , 5 µl/test

### Source:

Mouse

### Isotype:

IgG1, kappa

### GenBank Accession Number:

BC005861

### GeneID (NCBI):

3689

### ENSEMBL Gene ID:

ENSG00000160255

### UNIPROT ID:

P05107

### Full Name:

integrin, beta 2 (complement component 3 receptor 3 and 4 subunit)

### Calculated MW:

85 kDa

### Purification Method:

Protein G purification

### CloneNo.:

TS1/18

### Excitation/Emission maxima wavelengths:

493 nm / 522 nm

## Applications

### Tested Applications:

FC

### Species Specificity:

Human

## Background Information

CD18, also known as integrin beta-2, is a transmembrane protein that forms heterodimers with CD11a, CD11b, CD11c, CD11d (PMID: 1968349). CD11a/CD18 (LFA-1) is expressed by all leukocytes, while CD11b/CD18 (Mac-1) and CD11c/CD18 (p150,95) are normally restricted to expression on monocytes, macrophages, polymorphonuclear lymphocytes (PMNs), and natural killer cells (PMID: 1968349; 3109455; 10946284). CD18 plays an important role in mediating cell adhesion during immune response and defects of CD18 cause leukocyte adhesion deficiency (PMID: 3594570).

## Storage

### Storage:

Store at 2-8°C. Avoid exposure to light. Stable for one year after shipment.

### Storage Buffer:

PBS with 0.1% sodium azide and 0.5% BSA, pH 7.3.

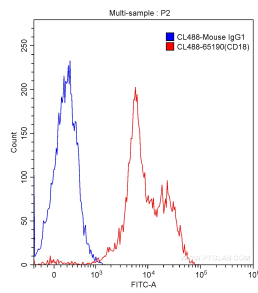
For technical support and original validation data for this product please contact:

T: 1 (888) 4PTGLAB (1-888-478-4522) (toll free in USA), or 1(312) 455-8498 (outside USA)

E: [proteintech@ptglab.com](mailto:proteintech@ptglab.com)  
W: [ptglab.com](http://ptglab.com)

This product is exclusively available under Proteintech Group brand and is not available to purchase from any other manufacturer.

## Selected Validation Data



1X10<sup>6</sup> human peripheral blood lymphocytes were surface stained with 5.00 ul/test Coralite® Plus 488-conjugated Anti-Human CD18 (CL488-65190, Clone: TS1/18) (red) or isotype control antibody (blue). Cells were not fixed.