

For Research Use Only

CoraLite® Plus 488 Rat IgG2b Isotype Control (LTF-2)



Catalog Number: **CL488-65211**

Basic Information

Catalog Number:

CL488-65211

Size:

100ug, 0.5 mg/mL

Source:

Rat

Isotype:

IgG2b, kappa

GenBank Accession Number:

GeneID (NCBI):

Full Name:

Purification Method:

Affinity purification

CloneNo.:

LTF-2

Excitation/Emission maxima
wavelengths:

493 nm / 522 nm

Applications

Tested Applications:

FC

Species Specificity:

Background Information

The LTF-2 immunoglobulin is useful as an isotype-matched control. The LTF-2 immunoglobulin has an unknown binding specificity and is used as an isotype control for rat IgG2b antibodies. This antibody has been quality-tested for flow cytometry as negative control.

Storage

Storage:

Store at 2-8°C. Avoid exposure to light. Stable for one year after shipment.

Storage Buffer:

PBS with 0.1% sodium azide and 0.5% BSA, pH 7.3.

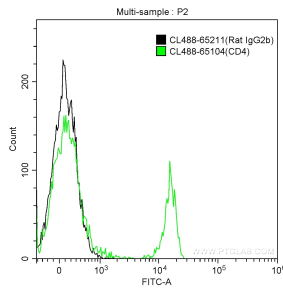
For technical support and original validation data for this product please contact:

T: 1 (888) 4PTGLAB (1-888-478-4522) (toll free
in USA), or 1(312) 455-8498 (outside USA)

E: proteintech@ptglab.com
W: ptglab.com

This product is exclusively available under Proteintech Group brand and is not available to purchase from any other manufacturer.

Selected Validation Data



1X10⁶ mouse splenocytes were surface stained with CoraLite® Plus 488-conjugated Rat IgG2b Isotype Control (CL488-65211, Clone: LTF-2) (black) or CoraLite® Plus 488-conjugated Anti-Mouse CD4 (CL488-65104, Clone: GK1.5) (green). Cells were not fixed.