

For Research Use Only

CoraLite® Plus 488 Anti-Mouse PLVAP (MECA-32)



Catalog Number: **CL488-65214**

Basic Information

Catalog Number: CL488-65214	GenBank Accession Number: BC013517	Purification Method: Protein A purification
Size: 100ug, 0.5 mg/ml	GeneID (NCBI): 84094	CloneNo.: MECA-32
Source: Rat	UNIPROT ID: Q91VC4	Excitation/Emission maxima wavelengths: 493 nm / 522 nm
Isotype: IgG2a, kappa	Full Name: plasmalemma vesicle associated protein	

Applications

Tested Applications:
FC
Species Specificity:
Mouse

Background Information

Plasmalemma vesicle-associated protein (PLVAP), also known as PV-1, PAL-E and MECA-32 antigen, is an endothelial cell-specific type II membrane N-glycosylated glycoprotein with a molecular weight of approximately 50-65 kDa, that forms homodimers in situ (PMID: 7626790; 30231925). The MECA-32 antibody, derived from rats immunized with murine lymph node stroma, shows high specificity for mouse endothelium in both embryonic and mature tissues (PMID: 2683264; 7626790). It recognizes most endothelial cells in the embryonic and in the adult mouse, with the exception of the brain, skeletal, and cardiac muscle, where the MECA-32 antigen has a more restricted distribution. In skeletal and cardiac muscle only small arterioles and venules express the MECA-32 antigen, while in the brain its expression is negatively correlated with the differentiation of the vasculature to form the blood brain barrier (PMID: 7626790).

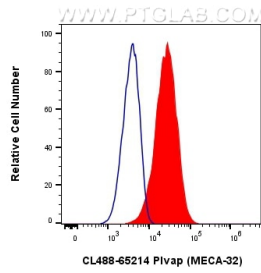
Storage

Storage:
Store at 2-8°C. Avoid exposure to light. Stable for one year after shipment.
Storage Buffer:
PBS with 0.09% sodium azide.

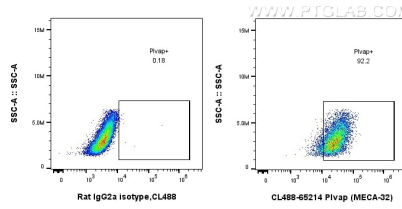
For technical support and original validation data for this product please contact:
T: 1 (888) 4PTGLAB (1-888-478-4522) (toll free in USA), or 1(312) 455-8498 (outside USA)
E: proteintech@ptglab.com
W: ptglab.com

This product is exclusively available under Proteintech Group brand and is not available to purchase from any other manufacturer.

Selected Validation Data



1X10⁶ bEnd.3 cells were surface stained with 0.5 ug CoraLite® Plus 488 Anti-Mouse PLVAP (CL488-65214, Clone:MECA-32) (red), or 0.5 ug CoraLite® Plus 488 Rat IgG2a Isotype Control (2A3) (CL488-65209, Clone: 2A3) (blue). Cells were not fixed.



1X10⁶ bEnd.3 cells were surface stained with 0.5 ug CoraLite® Plus 488 Anti-Mouse PLVAP (CL488-65214, Clone:MECA-32), or 0.5 ug CoraLite® Plus 488 Rat IgG2a Isotype Control (2A3) (CL488-65209, Clone: 2A3). Cells were not fixed.