

For Research Use Only

CoraLite® Plus 488 Anti-Human LRP1 (5A6)



Catalog Number: CL488-65233

Basic Information

| | | |
|---------------------------------------|---|---|
| Catalog Number: CL488-65233 | GenBank Accession Number: BC045107 | Purification Method: N/A |
| Size: 100tests , 5 µl/test | GeneID (NCBI): 4035 | CloneNo.: 5A6 |
| Source: Mouse | UNIPROT ID: Q07954 | Excitation/Emission maxima wavelengths: 493 nm / 522 nm |
| Isotype: IgG2b | Full Name: low density lipoprotein-related protein 1 (alpha-2-macroglobulin receptor) | |
| | Calculated MW: 505 kDa | |

Applications

Tested Applications:
FC

Species Specificity:
human

Background Information

LRP1 (Prolow-density lipoprotein receptor-related protein 1), also known as A2MR, APOER and CD91, is a type I transmembrane protein that belongs to the LDLR family. LRP1 is synthesized as a transmembrane glycosylated precursor of 600 kDa, and is subsequently cleaved to generate a large 515-kDa N-terminal extracellular subunit and an 85-kDa C-terminal transmembrane subunit, which are noncovalently associated with one another (PMID: 2112085; 8546712). LRP1 is a multifunctional receptor involved in the clearance of a large number of diverse ligands and modulating various cellular processes. LRP1 is implicated in conditions such as atherosclerosis, cancer and neurodegenerative diseases (PMID: 28381441).

Storage

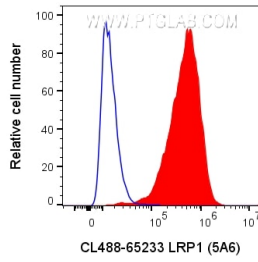
Storage:
Store at 2-8°C. Avoid exposure to light. Stable for one year after shipment.

Storage Buffer:
PBS with 0.09% sodium azide and 0.5% BSA.

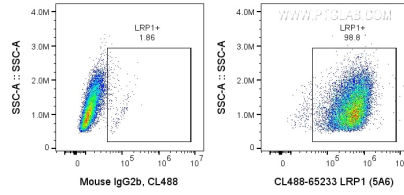
For technical support and original validation data for this product please contact:
T: 1 (888) 4PTGLAB (1-888-478-4522) (toll free in USA), or 1(312) 455-8498 (outside USA) E: proteintech@ptglab.com
W: ptglab.com

This product is exclusively available under Proteintech Group brand and is not available to purchase from any other manufacturer.

Selected Validation Data



1X10⁶ U-87 MG cells were surface stained with 5 ul CoraLite® Plus 488 Anti-Human LRP1 (CL488-65233, Clone:5A6), or Mouse IgG2b Isotype Control. Cells were not fixed.



1X10⁶ U-87 MG cells were surface stained with 5 ul CoraLite® Plus 488 Anti-Human LRP1 (CL488-65233, Clone:5A6), or Mouse IgG2b Isotype Control. Cells were not fixed.