

For Research Use Only

CoraLite® Plus 488 Mouse IgM Isotype Control (MOPC-104E)



Catalog Number: **CL488-65243**

Basic Information

Catalog Number:
CL488-65243

Size:
100ug, 0.2 mg/mL

Source:
Mouse

Isotype:
IgM, lambda

GenBank Accession Number:
GeneID (NCBI):

Full Name:

Purification Method:
Affinity purification

CloneNo.:
MOPC-104E

Excitation/Emission maxima
wavelengths:
493 nm / 522 nm

Applications

Tested Applications:
FC

Species Specificity:

Background Information

Storage

Storage:
Store at 2-8°C. Avoid exposure to light. Stable for one year after shipment.

Storage Buffer:
PBS with 0.09% sodium azide and 0.5% BSA.

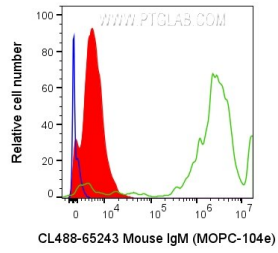
For technical support and original validation data for this product please contact:

T: 1 (888) 4PTGLAB (1-888-478-4522) (toll free
in USA), or 1(312) 455-8498 (outside USA)

E: proteintech@ptglab.com
W: ptglab.com

This product is exclusively available under Proteintech Group brand and is not available to purchase from any other manufacturer.

Selected Validation Data



1X10⁶ human peripheral blood platelets were surface stained with 0.2 ug CoraLite® Plus 488 Anti-Mouse IgM Isotype Control (CL488-65243, Clone: MOPC-104E) (red), unstained (blue), or CoraLite® Plus 488 Anti-Human CD36 (SMΦ) (green). Cells were not fixed.