

For Research Use Only

# CoraLite® Plus 488 Anti-Human CD36 (SMΦ)



Catalog Number: **CL488-65248**

## Basic Information

Catalog Number:

CL488-65248

Size:

100 tests, 5 ul/test

Source:

Mouse

Isotype:

IgM, kappa

GenBank Accession Number:

BC008406

GeneID (NCBI):

948

UNIPROT ID:

P16671

Full Name:

CD36 molecule (thrombospondin receptor)

Calculated MW:

472 aa, 53 kDa

Purification Method:

Affinity purification

CloneNo.:

SMΦ

Excitation/Emission maxima wavelengths:

493 nm / 522 nm

## Applications

Tested Applications:

FC

Species Specificity:

Human

## Background Information

CD36, also named as GP3B and GP4, is an 88-kDa membrane glycoprotein present on platelets, monocytes, erythroid precursors, endothelial cells, and several tumor cell lines. CD36 binds to collagen, thrombospondin, anionic phospholipids, long chain fatty acids and may function in the transport and/or as a regulator of fatty acid transport and oxidized LDL. CD36 may function as a cell adhesion molecule. It mediates cytoadherence of Plasmodium falciparum parasitized erythrocytes. Mutation of CD36 will cause platelet glycoprotein IV deficiency which known as CD36 deficiency. Genetic variations in CD36 are associated with susceptibility to coronary heart disease type 7 (CHDS7).

## Storage

Storage:

Store at 2-8°C. Avoid exposure to light. Stable for one year after shipment.

Storage Buffer:

PBS with 0.09% sodium azide and 0.5% BSA.

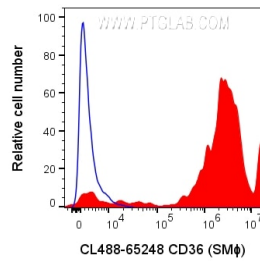
For technical support and original validation data for this product please contact:

T: 1 (888) 4PTGLAB (1-888-478-4522) (toll free in USA), or 1(312) 455-8498 (outside USA)

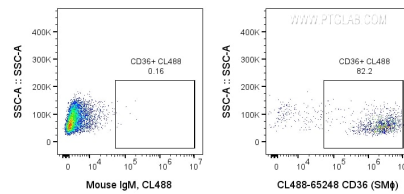
E: [proteintech@ptglab.com](mailto:proteintech@ptglab.com)  
W: [ptglab.com](http://ptglab.com)

This product is exclusively available under Proteintech Group brand and is not available to purchase from any other manufacturer.

## Selected Validation Data



1X10<sup>6</sup> human peripheral blood platelets were surface stained with 5 ul CoraLite® Plus 488 Anti-Human CD36 (CL488-65248, Clone:SMΦ), or CoraLite® Plus 488 Mouse IgM Isotype Control. Cells were not fixed. CD41a positive cells were gated.



1X10<sup>6</sup> human peripheral blood platelets were surface stained with 5 ul CoraLite® Plus 488 Anti-Human CD36 (CL488-65248, Clone:SMΦ), or CoraLite® Plus 488 Mouse IgM Isotype Control. Cells were not fixed. CD41a positive cells were gated.