

For Research Use Only

CoraLite® Plus 488 Anti-Human CD31 (WM-59)



Catalog Number: **CL488-65268**

Basic Information

Catalog Number:

CL488-65268

Size:

100 tests, 5 µl/test

Source:

Mouse

Isotype:

IgG1, kappa

GenBank Accession Number:

BC022512

GeneID (NCBI):

5175

ENSEMBL Gene ID:

ENSG00000261371

Full Name:

platelet/endothelial cell adhesion molecule

Calculated MW:

83 kDa

Purification Method:

Affinity purification

CloneNo.:

WM-59

Excitation/Emission maxima wavelengths:

493 nm / 522 nm

Applications

Tested Applications:

FC

Species Specificity:

Human

Background Information

CD31, also known as PECAM1 (Platelet endothelial cell adhesion molecule), is a member of the immunoglobulin gene superfamily of cell adhesion molecules. CD31 is a transmembrane glycoprotein that is highly expressed on the surface of the endothelium, making up a large portion of its intracellular junctions. It is also present on the surface of hematopoietic cells and immune cells including platelets, monocytes, neutrophils, natural killer cells, megakaryocytes and some types of T-cell (PMID: 9011572). As well as its role in cell-cell adhesion, CD31 functions as a signaling receptor, and is involved in important physiological events such as nitric oxide production, regulation of T-cell immunity and tolerance, leukocyte transendothelial migration and inflammation and angiogenesis (PMID: 21183735; 20978210; 17872453; 20634489).

Storage

Storage:

Store at 2-8°C. Avoid exposure to light. Stable for one year after shipment.

Storage Buffer:

PBS with 0.09% sodium azide and 0.5% BSA.

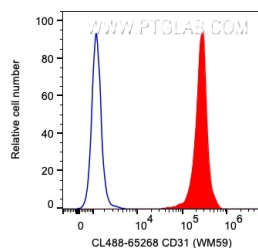
For technical support and original validation data for this product please contact:

T: 1 (888) 4PTGLAB (1-888-478-4522) (toll free in USA), or 1(312) 455-8498 (outside USA)

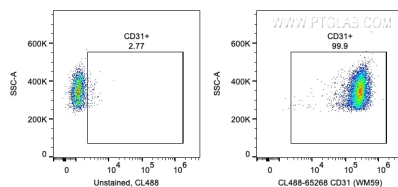
E: proteintech@ptglab.com
W: ptglab.com

This product is exclusively available under Proteintech Group brand and is not available to purchase from any other manufacturer.

Selected Validation Data



1X10⁶ human PBMCs were surface stained with 5 ul CoraLite® Plus 488 Anti-Human CD31 (CL488-65268, Clone:WM-59) (red) or unstained. Cells were not fixed. Monocytes were gated.



1X10⁶ human PBMCs were surface stained with 5 ul CoraLite® Plus 488 Anti-Human CD31 (CL488-65268, Clone:WM-59) or unstained. Cells were not fixed. Monocytes were gated.