

For Research Use Only

# CoraLite® Plus 488 Anti-Human CD244 (2B4.69)



Catalog Number: **CL488-65270**

## Basic Information

|                                       |  |   |
|---------------------------------------|--|---|
| <b>Catalog Number:</b><br>CL488-65270 | <b>GenBank Accession Number:</b><br>BC028073                             | <b>Purification Method:</b><br>Affinity purification                  |
| <b>Size:</b><br>100tests , 5 ul/test  | <b>GeneID (NCBI):</b><br>51744   | <b>CloneNo.:</b><br>2B4.69  |
| <b>Source:</b><br>Mouse               | <b>Full Name:</b><br>CD244 molecule, natural killer cell<br>receptor 2B4 | <b>Excitation/Emission maxima<br/>wavelengths:</b><br>493 nm / 522 nm |
| <b>Isotype:</b><br>IgG1               |  |   |

## Applications

**Tested Applications:**  
FC

**Species Specificity:**  
Human

## Background Information

CD244, also known as SLAMF4 or 2B4, is a type I transmembrane glycoprotein belonging to the signaling lymphocyte activation molecule (SLAM) family. It consists of an extracellular segment with two immunoglobulin (Ig)-like domains, a transmembrane region, and a cytoplasmic domain containing tyrosine-based motifs (PMID: 9841922; 30546369). CD244 is present on natural killer (NK) cells,  $\gamma\delta$  T cells, a subset of CD8+ T cells, monocytes, basophils, dendritic cells, and myeloid-derived suppressor cells (MDSCs) (PMID: 30546369). It binds to CD48 with high affinity and transmits stimulatory or inhibitory signals that regulate immune function (PMID: 9841922; 18523281).

## Storage

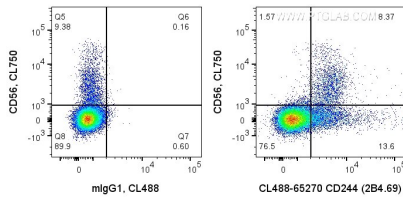
**Storage:**  
Store at 2-8°C. Avoid exposure to light. Stable for one year after shipment.

**Storage Buffer:**  
PBS with 0.09% sodium azide and 0.5% BSA.

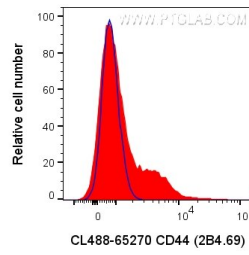
For technical support and original validation data for this product please contact:  
T: 1 (888) 4PTGLAB (1-888-478-4522) (toll free in USA), or 1(312) 455-8498 (outside USA)      E: [proteintech@ptglab.com](mailto:proteintech@ptglab.com)  
W: [ptglab.com](http://ptglab.com)

This product is exclusively available under Proteintech Group brand and is not available to purchase from any other manufacturer.

## Selected Validation Data



1X10<sup>6</sup> human PBMCs were surface co-stained with CL750 Anti-Human CD56 and 5 ul CoraLite® Plus 488 Anti-Human CD244 (CL488-65270, Clone:2B4.69), or Mouse IgG1 Isotype Control. Cells were not fixed. Lymphocytes were gated.



1X10<sup>6</sup> human PBMCs were surface stained with 5 ul CoraLite® Plus 488 Anti-Human CD244 (CL488-65270, Clone:2B4.69), or Mouse IgG1 Isotype Control. Cells were not fixed. Lymphocytes were gated.