

For Research Use Only

# CoraLite® Plus 488 Anti-Human CD33 (WM53)



Catalog Number: **CL488-65272**

## Basic Information

<b>Catalog Number:</b> CL488-65272	<b>GenBank Accession Number:</b> BC028152	<b>Purification Method:</b> Affinity purification
<b>Size:</b> 100tests , 5 ul/test	<b>GeneID (NCBI):</b> 945	<b>CloneNo.:</b> WM53
<b>Source:</b> Mouse	<b>Full Name:</b> CD33 molecule	<b>Excitation/Emission maxima wavelengths:</b> 493 nm / 522 nm
<b>Isotype:</b> IgG1, kappa	<b>Calculated MW:</b> 364 aa, 40 kDa	

## Applications

**Tested Applications:**  
FC

**Species Specificity:**  
Human

## Background Information

CD33, also referred to as Siglec-3, is a 67-kDa glycosylated transmembrane protein of sialic acid-binding immunoglobulin-like lectin (siglec) family. CD33 is expressed on monocytes, myeloid progenitors, granulocytes, mast cells, some T cells. It may mediate cell-to-cell adhesion and act as a receptor that inhibits the proliferation of normal and leukemic myeloid cells.

## Storage

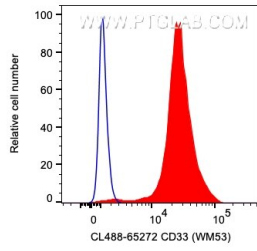
**Storage:**  
Store at 2-8°C. Avoid exposure to light. Stable for one year after shipment.

**Storage Buffer:**  
PBS with 0.09% sodium azide and 0.5% BSA.

For technical support and original validation data for this product please contact:  
T: 1 (888) 4PTGLAB (1-888-478-4522) (toll free in USA), or 1(312) 455-8498 (outside USA)      E: [proteintech@ptglab.com](mailto:proteintech@ptglab.com)  
W: [ptglab.com](http://ptglab.com)

**This product is exclusively available under Proteintech Group brand and is not available to purchase from any other manufacturer.**

## Selected Validation Data



1X10<sup>6</sup> human PBMCs were surface stained with 5 ul CoraLite® Plus 488 Anti-Human CD33 (CL488-65272, Clone: WM53) (red) or unstained. Cells were not fixed. Monocytes were gated.