

For Research Use Only

CoraLite® Plus 488 Anti-Mouse CD4 (RM4-4) Rat IgG2a Recombinant Antibody

Catalog Number: CL488-65655



Basic Information

Catalog Number:
CL488-65655

Size:
100ug, 500 ug/ml

Source:
Rat

Isotype:
IgG2a

GenBank Accession Number:
BC039137

GeneID (NCBI):
12504

UNIPROT ID:
P06332

Full Name:
CD4 antigen

Purification Method:
Protein A purification

CloneNo.:
RM4-4

Recommended Dilutions:
FC: 0.25 ug per 10⁶ cells in a 100 µl suspension

Excitation/Emission maxima wavelengths:
493 nm / 522 nm

Applications

Tested Applications:
FC

Species Specificity:
mouse

Positive Controls:

FC : mouse splenocytes,

Background Information

CD4 is a 55-kDa transmembrane glycoprotein expressed on T helper cells, majority of thymocytes, monocytes, macrophages, and dendritic cells (PMID: 9304802; 12213222). CD4 is an accessory protein for MHC class-II antigen/T-cell receptor interaction. It plays an important role in T helper cell development and activation (PMID: 9539765; 3112582). CD4 serves as a receptor for the human immunodeficiency virus (HIV) (PMID: 9304802).

Storage

Storage:

Store at 2-8°C. Avoid exposure to light. Stable for one year after shipment.

Storage Buffer:

PBS with 0.09% sodium azide, pH7.3

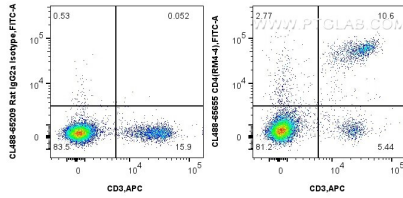
For technical support and original validation data for this product please contact:

T: 1 (888) 4PTGLAB (1-888-478-4522) (toll free in USA), or 1(312) 455-8498 (outside USA)

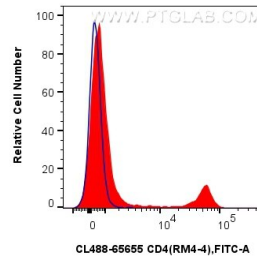
E: proteintech@ptglab.com
W: ptglab.com

This product is exclusively available under Proteintech Group brand and is not available to purchase from any other manufacturer.

Selected Validation Data



1x10⁶ mouse splenocytes were surface stained with APC Anti-Mouse CD3, and 0.25 ug CoraLite® Plus 488 Anti-Mouse CD4 (RM4-4) Rat IgG2a RecAb (CL488-65655, Clone: RM4-4) or CoraLite® Plus 488 Rat IgG2a Isotype Control (2A3) (CL488-65209, Clone: 2A3). Cells were not fixed.



1x10⁶ mouse splenocytes were surface stained with 0.25 ug CoraLite® Plus 488 Anti-Mouse CD4 (RM4-4) Rat IgG2a RecAb (CL488-65655, Clone: RM4-4) (red), or CoraLite® Plus 488 Rat IgG2a Isotype Control (2A3) (CL488-65209, Clone: 2A3) (blue). Cells were not fixed.