

For Research Use Only

# CoraLite® Plus 488-conjugated GFP tag Monoclonal antibody

Catalog Number: CL488-66002



## Basic Information

### Catalog Number:

CL488-66002

### GenBank Accession Number:

M62653

### Purification Method:

Protein A purification

### Size:

100ul , Concentration: 1000 ug/ml by  
Nanodrop;

### GeneID (NCBI):

Full Name:

### CloneNo.:

1E10H7

### Source:

Mouse

### Calculated MW:

26 kDa

### Recommended Dilutions:

WB 1:2000-1:10000

IF/ICC 1:50-1:500

### Isotype:

IgG2a

### Excitation/Emission maxima wavelengths:

493 nm / 522 nm

### Immunogen Catalog Number:

AG2128

## Applications

### Tested Applications:

WB, IF/ICC

### Positive Controls:

WB : Recombinant protein,

IF/ICC : Transfected HEK-293 cells,

### Species Specificity:

recombinant protein

## Background Information

Green Fluorescent Proteins (GFPs) encompass a diverse range of proteins carrying a green chromophore, originating from various species and forming different protein lineages. Wildtype GFP consists of 238 amino acid residues (26.9 kDa). GFP was first identified in the jellyfish *Aequorea victoria*. It emits green light with a peak wavelength of 509 nm upon excitation by blue light at 395 nm. When fused with other proteins, GFP serves as a versatile reporter protein e.g. for quantifying expression levels or facilitates visualization of subcellular localization through fluorescence microscopy. This antibody is a mouse (IgG2a) monoclonal antibody against GFP reactive to GFP, eGFP, eYFP, YFP and CFP. This antibody is labeled with CoraLite Plus 488.

## Storage

### Storage:

Store at -20°C. Avoid exposure to light. Stable for one year after shipment.

### Storage Buffer:

PBS with 50% Glycerol, 0.05% Proclin300, 0.5% BSA, pH 7.3.

Aliquoting is unnecessary for -20°C storage

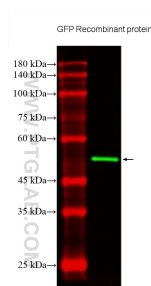
For technical support and original validation data for this product please contact:

T: 1 (888) 4PTGLAB (1-888-478-4522) (toll free  
in USA), or 1(312) 455-8498 (outside USA)

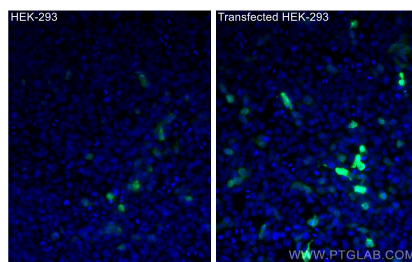
E: [proteintech@ptglab.com](mailto:proteintech@ptglab.com)  
W: [ptglab.com](http://ptglab.com)

This product is exclusively available under Proteintech Group brand and is not available to purchase from any other manufacturer.

## Selected Validation Data



Recombinant protein were subjected to SDS PAGE followed by western blot with CL488-66002 (GFP tag antibody) at dilution of 1:5000 incubated at room temperature for 1.5 hours.



Immunofluorescent analysis of (-20°C Ethanol) fixed Transfected HEK-293 cells using CoraLite® Plus 488 GFP tag antibody (CL488-66002, Clone: 1E10H7) at dilution of 1:200.