

For Research Use Only

CoraLite® Plus 488-conjugated HA Tag Monoclonal antibody

Catalog Number: CL488-66006

2 Publications



Basic Information

Catalog Number:

CL488-66006

GenBank Accession Number:

GeneID (NCBI):

6

Size:

100ul , Concentration: 1000 ug/ml by Nanodrop;

Full Name:

HA Tag

Source:

Mouse

Isotype:

IgG1

Purification Method:

Protein G purification

CloneNo.:

1F5C6

Recommended Dilutions:

IF/ICC 1:50-1:500

Excitation/Emission maxima wavelengths:

493 nm / 522 nm

Applications

Tested Applications:

IF/ICC

Cited Applications:

IF

Species Specificity:

recombinant protein

Positive Controls:

IF/ICC : Transfected HEK-293 cells,

Background Information

Protein tags are a protein or peptide sequences located either on the C- or N- terminal of the target protein, which can facilitate solubility, detection, purification, localization, and expression of the target protein. The HA tag corresponds to amino acid residues YPYDVPDYA of a surface glycoprotein -human influenza virus hemagglutinin (HA). The HA tag is commonly used for a variety of research applications including chromatin immunoprecipitation, ELISA, flow cytometry, western blotting, immunocytochemistry/immunofluorescence among of others.

Notable Publications

Author	Pubmed ID	Journal	Application
Hang Zhao	39508411	J Extracell Vesicles	
Jitao Zeng	37952156	Cell Rep	IF

Storage

Storage:

Store at -20°C. Avoid exposure to light. Stable for one year after shipment.

Storage Buffer:

PBS with 50% Glycerol, 0.05% Proclin300, 0.5% BSA, pH 7.3.

Aliquoting is unnecessary for -20°C storage

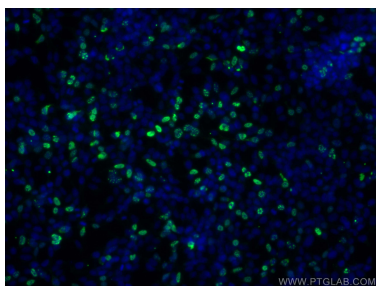
For technical support and original validation data for this product please contact:

T: 1 (888) 4PTGLAB (1-888-478-4522) (toll free in USA), or 1(312) 455-8498 (outside USA)

E: proteintech@ptglab.com
W: ptglab.com

This product is exclusively available under Proteintech Group brand and is not available to purchase from any other manufacturer.

Selected Validation Data



Immunofluorescent analysis of (-20°C Ethanol)
fixed Transfected HEK-293 cells using CoraLite®
Plus 488 HA Tag antibody (CL488-66006, Clone:
1F5C6) at dilution of 1:200.