

For Research Use Only

# CoraLite® Plus 488-conjugated DDB1 Monoclonal antibody



Catalog Number: CL488-66010

Featured Product

## Basic Information

<b>Catalog Number:</b> CL488-66010	<b>GenBank Accession Number:</b> BC011686	<b>Purification Method:</b> Protein A purification
<b>Size:</b> 100ul , Concentration: 1000 µg/ml by Nanodrop;	<b>GeneID (NCBI):</b> 1642	<b>CloneNo.:</b> 4F6C6
<b>Source:</b> Mouse	<b>Full Name:</b> damage-specific DNA binding protein 1, 127kDa	<b>Recommended Dilutions:</b> WB 1:500-1:2000
<b>Isotype:</b> IgG2b	<b>Calculated MW:</b> 1140 aa, 127 kDa	<b>Excitation/Emission maxima wavelengths:</b> 493 nm / 522 nm
<b>Immunogen Catalog Number:</b> AG17903	<b>Observed MW:</b> 127 kDa	

## Applications

<b>Tested Applications:</b> WB	<b>Positive Controls:</b> WB : Jurkat cells, HEK-293 cells, HeLa cells
<b>Species Specificity:</b> human, mouse, rat	

## Background Information

DDB1, also named as XAP1, XPCe, DDBa and XPE-BF, belongs to the DDB1 family. It is required for DNA repair. DDB1 binds to DDB2 to form the UV-damaged DNA-binding protein complex (the UV-DDB complex). The UV-DDB complex may recognize UV-induced DNA damage and recruit proteins of the nucleotide excision repair pathway (the NER pathway) to initiate DNA repair. The functional specificity of the DCX E3 ubiquitin-protein ligase complex is determined by the variable substrate recognition component recruited by DDB1. This antibody is specific to DDB1.

## Storage

**Storage:**  
Store at -20°C. Avoid exposure to light. Stable for one year after shipment.  
**Storage Buffer:**  
PBS with 50% Glycerol, 0.05% Proclin300, 0.5% BSA, pH 7.3.  
**Aliquoting is unnecessary for -20°C storage**

\*\*\* 20ul sizes contain 0.1% BSA

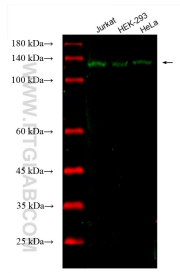
For technical support and original validation data for this product please contact:

T: 1 (888) 4PTGLAB (1-888-478-4522) (toll free  
in USA), or 1(312) 455-8498 (outside USA)

E: [proteintech@ptglab.com](mailto:proteintech@ptglab.com)  
W: [ptglab.com](http://ptglab.com)

This product is exclusively available under Proteintech Group brand and is not available to purchase from any other manufacturer.

## Selected Validation Data



Various lysates were subjected to SDS PAGE followed by western blot with CL488-66010 (DDB1 antibody) at dilution of 1:1000 incubated at room temperature for 1.5 hours.