

For Research Use Only

CoraLite® Plus 488-conjugated HLA class I ABC Monoclonal antibody

Catalog Number: CL488-66013

Featured Product



Basic Information

Catalog Number:

CL488-66013

Size:

100ul , Concentration: 1000 ug/ml by Nanodrop;

Source:

Mouse

Isotype:

IgG2b

Immunogen Catalog Number:

AG7488

GenBank Accession Number:

BC003069

GeneID (NCBI):

3105

UNIPROT ID:

P04439

Full Name:

major histocompatibility complex, class I, A

Calculated MW:

41 kDa

Observed MW:

40-44 kDa

Purification Method:

Protein A purification

CloneNo.:

5C5B7

Recommended Dilutions:

IF-P 1:50-1:500

IF/ICC 1:50-1:500

Excitation/Emission maxima wavelengths:

493 nm / 522 nm

Applications

Tested Applications:

IF/ICC, IF-P, FC

Species Specificity:

human, pig

Positive Controls:

IF-P : human tonsillitis tissue, Raji cells

IF/ICC : Raji cells,

Background Information

Human major histocompatibility complex (MHC) antigens, also referred to as human leukocyte antigens (HLA), are encoded by genes located on the short arm of chromosome 6 (6p21.3). There are two classes of HLA antigens: class I (HLA-A, B and C) and class II (HLA-D). This class I molecules are polymorphic membrane glycoproteins composed of a heavy (alpha) chain (44 kDa) which is encoded by a HLA class I gene (HLA-A, B or C), and β 2-microglobulin light (beta) chain (12 kDa). They are involved in the presentation of foreign antigens to the immune system. (PMID: 667938; 3375250)

Storage

Storage:

Store at -20°C. Avoid exposure to light. Stable for one year after shipment.

Storage Buffer:

PBS with 50% Glycerol, 0.05% Proclin300, 0.5% BSA, pH 7.3.

Aliquoting is unnecessary for -20°C storage

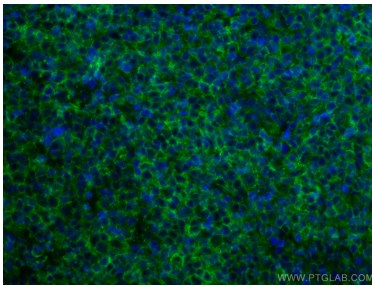
For technical support and original validation data for this product please contact:

T: 1 (888) 4PTGLAB (1-888-478-4522) (toll free in USA), or 1(312) 455-8498 (outside USA)

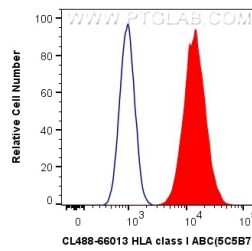
E: proteintech@ptglab.com
W: ptglab.com

This product is exclusively available under Proteintech Group brand and is not available to purchase from any other manufacturer.

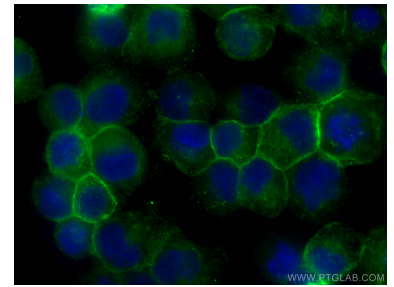
Selected Validation Data



Immunofluorescent analysis of (4% PFA) fixed human tonsillitis tissue using CL488-66013 (HLA class I ABC antibody) at dilution of 1:50.



1X10⁶ Raji cells were surface stained with 0.4 ug CoraLite® Plus 488 Anti-Human HLA class I ABC (CL488-66013, Clone:5C5B7) (red), or 0.4 ug CoraLite® Plus 488 Mouse IgG2b Isotype Control (MPC-11) (CL488-65128, Clone: MPC-11) (blue). Cells were not fixed.



Immunofluorescent analysis of (4% PFA) fixed Raji cells using CoraLite® Plus 488 HLA class I ABC antibody (CL488-66013, Clone: 5C5B7) at dilution of 1:200.