

For Research Use Only

CoraLite® Plus 488-conjugated CDC6 Monoclonal antibody



Catalog Number:CL488-66021

Basic Information

| | | |
|---|---|---|
| Catalog Number: CL488-66021 | GenBank Accession Number: BC025232 | Purification Method: Protein G purification |
| Size: 100ul , Concentration: 1000 µg/ml by Nanodrop; | GeneID (NCBI): 990 | CloneNo.: 6F12D2 |
| Source: Mouse | Full Name: cell division cycle 6 homolog (S. cerevisiae) | Recommended Dilutions: IF 1:50-1:500 |
| Isotype: IgG1 | Calculated MW: 560 aa, 63 kDa | Excitation/Emission maxima wavelengths: 493 nm / 522 nm |
| Immunogen Catalog Number: AG17958 | Observed MW: 65 kDa | |

Applications

| | |
|--|--|
| Tested Applications: FC (Intra), IF | Positive Controls: IF : HepG2 cells, |
| Species Specificity: human, rat, mouse | |

Background Information

CDC6, also named as CDC18L and HsCDC18, belongs to the CDC6/cdc18 family. It is involved in the initiation of DNA replication and functions as a regulator at the early steps of DNA replication. It also participates in checkpoint controls that ensure DNA replication is completed before mitosis is initiated. It localizes in cell nucleus during cell cycle G1, but translocates to the cytoplasm at the start of S phase. The subcellular translocation of this protein during cell cycle is regulated through its phosphorylation by Cdk5. Defects in CDC6 are the cause of Meier-Gorlin syndrome type 5 (MGORS5). MGORS5 is a syndrome characterized by bilateral microtia, aplasia/hypoplasia of the patellae, and severe intrauterine and postnatal growth retardation with short stature and poor weight gain. This antibody is a mouse monoclonal antibody raised against residues near the C terminus of human CDC6.

Storage

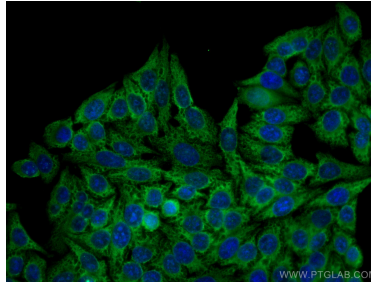
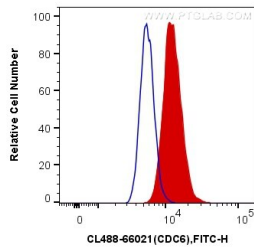
Storage:
Store at -20°C. Avoid exposure to light. Stable for one year after shipment.
Storage Buffer:
PBS with 50% Glycerol, 0.05% Proclin300, 0.5% BSA, pH 7.3.
Aliquoting is unnecessary for -20°C storage

*** 20ul sizes contain 0.1% BSA

For technical support and original validation data for this product please contact:
T: 1 (888) 4PTGLAB (1-888-478-4522) (toll free in USA), or 1(312) 455-8498 (outside USA) E: proteintech@ptglab.com W: ptglab.com

This product is exclusively available under Proteintech Group brand and is not available to purchase from any other manufacturer.

Selected Validation Data



1X10⁶ HepG2 cells were intracellularly stained with 0.4 ug CoraLite® Plus 488 Anti-Human CDC6 (CL488-66021, Clone:6F12D2) (red), or 0.4 ug Mouse IgG1 Isotype Control (CL488-66360, Clone: T1F8D3F10) (blue). Cells were fixed with 4% PFA and permeabilized with Flow Cytometry Perm Buffer (PF00011-C).

Immunofluorescent analysis of (-20°C Methanol) fixed HepG2 cells using CoraLite® Plus 488 CDC6 antibody (CL488-66021, Clone: 6F12D2) at dilution of 1:200.