

For Research Use Only



# CoraLite® Plus 488-conjugated Protein C inhibitor Monoclonal antibody

Catalog Number:CL488-66030

## Basic Information

<b>Catalog Number:</b> CL488-66030	<b>GenBank Accession Number:</b> BC008915	<b>Purification Method:</b> Protein A purification
<b>Size:</b> 100ul , Concentration: 1000 µg/ml by Nanodrop;	<b>GeneID (NCBI):</b> 5104	<b>CloneNo.:</b> 2H6G2
<b>Source:</b> Mouse	<b>Full Name:</b> serpin peptidase inhibitor, clade A (alpha-1 antiproteinase, antitrypsin), member 5	<b>Recommended Dilutions:</b> IF 1:50-1:500
<b>Isotype:</b> IgG2a	<b>Calculated MW:</b> 46 kDa	<b>Excitation/Emission maxima wavelengths:</b> 488 nm / 515 nm
<b>Immunogen Catalog Number:</b> AG18094		

## Applications

<b>Tested Applications:</b> IF	<b>Positive Controls:</b> IF : human ovary tumor tissue,
<b>Species Specificity:</b> human	

## Background Information

SERPINA5 (also called Protein C Inhibitor, PCI ) is a serpin type of serine protease inhibitor that is found in many tissues and fluids in human, including blood plasma, seminal plasma and urine. PCI found in blood originates from the liver and is capable of inhibiting several serine proteases involved in the regulation of coagulation and fibrinolysis, including activated protein C, thrombin, factor Xa, various kallikreins and plasminogen activators. PCI has been found to have antimicrobial and antitumor properties and thus appears to be a multi-functional protein.

## Storage

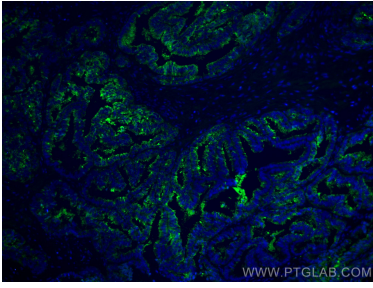
**Storage:**  
Store at -20°C. Avoid exposure to light.  
**Storage Buffer:**  
PBS with 50% Glycerol, 0.05% Proclin300, 0.5% BSA, pH 7.3.  
Aliquoting is unnecessary for -20°C storage

\*\*\* 20ul sizes contain 0.1% BSA

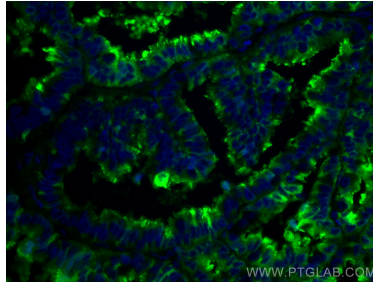
For technical support and original validation data for this product please contact:  
T: 1 (888) 4PTGLAB (1-888-478-4522) (toll free in USA), or 1(312) 455-8498 (outside USA) E: proteintech@ptglab.com W: ptglab.com

This product is exclusively available under Proteintech Group brand and is not available to purchase from any other manufacturer.

## Selected Validation Data



Immunofluorescent analysis of (4% PFA) fixed human ovary tumor tissue using CoraLite® Plus 488 Protein C inhibitor antibody (CL488-66030, Clone: 2H6G2 ) at dilution of 1:200.



Immunofluorescent analysis of (4% PFA) fixed human ovary tumor tissue using CoraLite® Plus 488 Protein C inhibitor antibody (CL488-66030, Clone: 2H6G2 ) at dilution of 1:200.