

For Research Use Only

CoraLite® Plus 488-conjugated ASS1 Monoclonal antibody



Catalog Number: CL488-66036

Featured Product

Basic Information

Catalog Number: CL488-66036	GenBank Accession Number: BC009243	Purification Method: Protein G purification
Size: 100ul , Concentration: 1000 µg/ml by Nanodrop;	GeneID (NCBI): 445	CloneNo.: 1D1A11
Source: Mouse	Full Name: argininosuccinate synthetase 1	Recommended Dilutions: IF 1:50-1:500
Isotype: IgG1	Calculated MW: 412 aa, 47 kDa	Excitation/Emission maxima wavelengths: 488 nm / 515 nm
Immunogen Catalog Number: AG9314	Observed MW: 40-45 kDa	

Applications

Tested Applications: IF	Positive Controls: IF : MCF-7 cells,
Species Specificity: human, pig, mouse, rat	

Background Information

ASS1 is a rate-limiting enzyme in the urea cycle. Citrullinemia type I is an autosomal recessive disorder that is caused by a deficiency of the urea cycle enzyme argininosuccinate synthetase (ASS1). Deficiency of ASS1 shows various clinical manifestations encompassing severely affected patients with fatal neonatal hyperammonemia as well as asymptomatic individuals with only a biochemical phenotype (PMID:19006241).

Storage

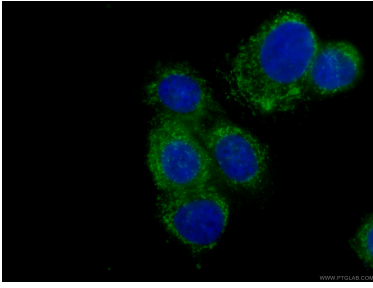
Storage:
Store at -20°C. Avoid exposure to light. Stable for one year after shipment.
Storage Buffer:
PBS with 50% Glycerol, 0.05% Proclin300, 0.5% BSA, pH 7.3.
Aliquoting is unnecessary for -20°C storage

*** 20ul sizes contain 0.1% BSA

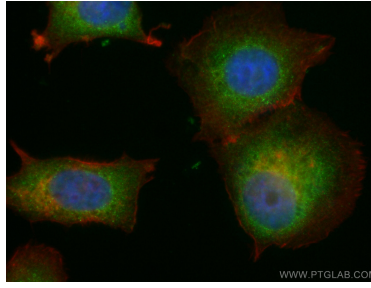
For technical support and original validation data for this product please contact:
T: 1 (888) 4PTGLAB (1-888-478-4522) (toll free in USA), or 1(312) 455-8498 (outside USA)
E: proteintech@ptglab.com
W: ptglab.com

This product is exclusively available under Proteintech Group brand and is not available to purchase from any other manufacturer.

Selected Validation Data



Immunofluorescent analysis of (4% PFA) fixed MCF-7 cells using CL488-66036 (ASS1 antibody) at dilution of 1:100.



Immunofluorescent analysis of (4% PFA) fixed MCF-7 cells using CoraLite® Plus 488-conjugated ASS1 antibody (CL488-66036, Clone: 1D1A11) at dilution of 1:100, 594phalloidin (red).