

For Research Use Only

CoraLite® Plus 488-conjugated HSP60 Monoclonal antibody

Catalog Number: CL488-66041

Featured Product

1 Publications



Basic Information

Catalog Number:

CL488-66041

Size:

100ul, Concentration: 1000 ug/ml by Nanodrop;

Source:

Mouse

Isotype:

IgG1

Immunogen Catalog Number:

AG7848

GenBank Accession Number:

BC003030

GeneID (NCBI):

3329

UNIPROT ID:

P10809

Full Name:

heat shock 60kDa protein 1 (chaperonin)

Calculated MW:

61 kDa

Observed MW:

60 kDa

Purification Method:

Protein G purification

CloneNo.:

2F10E7

Recommended Dilutions:

IF/ICC 1:50-1:500

Excitation/Emission maxima wavelengths:

493 nm / 522 nm

Applications

Tested Applications:

IF/ICC, FC (Intra)

Cited Applications:

RIP

Species Specificity:

human, mouse, rat

Cited Species:

human

Positive Controls:

IF/ICC : HepG2 cells,

Background Information

HSPD1, also known as HSP60, belongs to the chaperonin family and acts as a chaperone to enhance cell survival under physiological stresses. Hsp60 has been shown to be connected with many aspects of cell functions such as protein folding and assembling of polypeptide chains in mitochondria. Recently it has been reported that HSP60 is associated with apoptosis or inhibition of cancer cell growth. (21822415)

Notable Publications

Author	Pubmed ID	Journal	Application
Lei Yang	39826668	Cancer Lett	RIP

Storage

Storage:

Store at -20°C. Avoid exposure to light. Stable for one year after shipment.

Storage Buffer:

PBS with 50% Glycerol, 0.05% Proclin300, 0.5% BSA, pH 7.3.

Aliquoting is unnecessary for -20°C storage

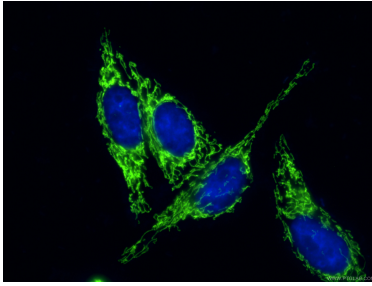
For technical support and original validation data for this product please contact:

T: 1 (888) 4PTGLAB (1-888-478-4522) (toll free in USA), or 1(312) 455-8498 (outside USA)

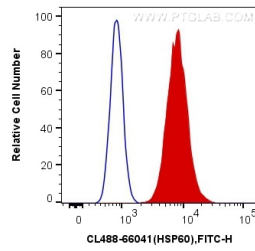
E: proteintech@ptglab.com
W: ptglab.com

This product is exclusively available under Proteintech Group brand and is not available to purchase from any other manufacturer.

Selected Validation Data



Immunofluorescent analysis of (4% PFA) fixed HepG2 cells using CL488-66041 (HSP60 antibody) at dilution of 1:50.



1X10⁶ HepG2 cells were intracellularly stained with 1 ug CoraLite® Plus 488 Anti-Human HSP60 (CL488-66041, Clone:2F10E7) (red), or 1 ug Control Antibody. Cells were fixed with 4% PFA and permeabilized with Flow Cytometry Perm Buffer (PF00011-C).