

For Research Use Only

CoraLite® Plus 488-conjugated LONP1 Monoclonal antibody

Catalog Number:CL488-66043



Basic Information

Catalog Number:	GenBank Accession Number:	Purification Method:
CL488-66043	BC000235	Protein G purification
Size:	GeneID (NCBI):	CloneNo.:
100ul , Concentration: 1000 ug/ml by Nanodrop;	9361	1C6C12
Source:	UNIPROT ID:	Recommended Dilutions:
Mouse	P36776	IF/ICC 1:200-1:800
Isotype:	Full Name:	Excitation/Emission maxima wavelengths:
IgG1	lon peptidase 1, mitochondrial	493 nm / 522 nm
Immunogen Catalog Number:	Calculated MW:	
AG7306	106 kDa	
	Observed MW:	
	100 kDa	

Applications

Tested Applications:	Positive Controls:
IF/ICC	IF/ICC : C6 cells,
Species Specificity:	
human, mouse, rat	

Background Information

LONP1(Lon protease homolog, mitochondrial) is also named as LONP, LONHS, HLON, LON, PRSS15, PIM1, MGC1498 and belongs to the peptidase S16 family. It seems to play a major role in the elimination of oxidatively modified proteins in the mitochondrial matrix(PMID:18021745). LONP1, also a nuclearly encoded and mitochondrially located stress-responsive protease, is involved in heme-mediated ALAS-1 turnover(PMID:21659532). It recognizes specific surface determinants or folds, initiates proteolysis at solvent-accessible sites, and generates unfolded polypeptides that are then processively degraded(PMID:15870080).

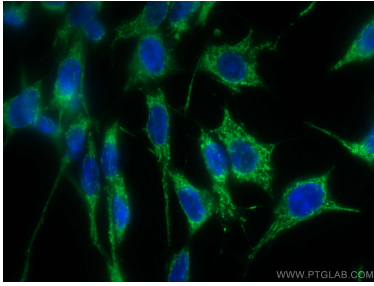
Storage

Storage:
Store at -20°C. Avoid exposure to light. Stable for one year after shipment.
Storage Buffer:
PBS with 50% Glycerol, 0.05% Proclin300, 0.5% BSA, pH 7.3.
Aliquoting is unnecessary for -20°C storage

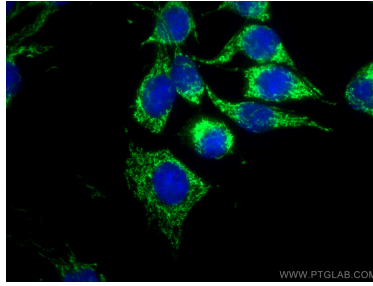
For technical support and original validation data for this product please contact:
T: 1 (888) 4PTGLAB (1-888-478-4522) (toll free in USA), or 1(312) 455-8498 (outside USA)
E: proteintech@ptglab.com
W: ptglab.com

This product is exclusively available under Proteintech Group brand and is not available to purchase from any other manufacturer.

Selected Validation Data



Immunofluorescent analysis of (-20°C Ethanol) fixed C6 cells using CoraLite® Plus 488 LONP1 antibody (CL488-66043, Clone: 1C6C12) at dilution of 1:400.



Immunofluorescent analysis of (-20°C Ethanol) fixed C6 cells using CoraLite® Plus 488 LONP1 antibody (CL488-66043, Clone: 1C6C12) at dilution of 1:400.